

\$834,900 - 328 200 Tyee Rd, Victoria

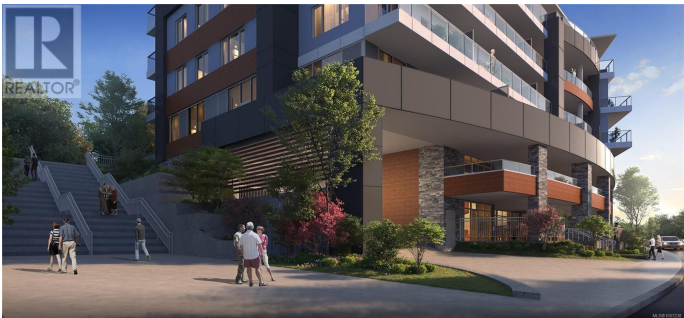
MLS® #1007238

\$834,900

1 Bedroom, 1.00 Bathroom, 708 sqft
Single Family on 0.02 Acres

Songhees, Victoria, British Columbia

Suite 328 is a one bed and den suite...Welcome to Opal Victoriaâ€”an exceptional collection of 48 pre-sale condominiums now for sale within a 160-suite luxury seniors' community in the heart of Songhees. Designed for adults 65+, with flexibility for a younger spouse or intergenerational living, Opal offers independent living with the option to transition seamlessly into licensed care. Just steps from the waterfront walkway and downtown, yet set apart by the Johnson Street Bridge, Opal is surrounded by ocean access and mountain views in a resort-like setting located at the corner of Tyee and Kimta Roads. Enjoy 30,000 sq ft of amenities including a rooftop sky-lounge with fire bowls, farm-to-table herb gardens, theatre, movement studio, salon, 24-hour concierge, and more. Shops and services are just three blocks away. Live well today and into the future. Construction slated to start in about 6 months with delivery ~2 years following. Presentation Centre now open. (id:6289)



Essential Information

Listing #	1007238
Price	\$834,900
Bedrooms	1
Bathrooms	1.00
Square Footage	708

Acres	0.02
Type	Single Family
Sub-Type	Strata

Community Information

Address	328 200 Tyee Rd
Subdivision	Songhees
City	Victoria
Province	British Columbia
Postal Code	V9A6X5

Interior

Heating	Forced air
Cooling	Air Conditioned

Additional Information

Zoning	Residential
--------	-------------

Listing Details

Listing Office	Real Broker B.C. Ltd.
----------------	-----------------------



The trademarks MLS®, Multiple Listing Service® and the associated logos are owned by The Canadian Real Estate Association (CREA) and identify the quality of services provided by real estate professionals who are members of CREA. REALTOR®. Member of CREA and more.

Listing information last updated on October 14th, 2025 at 4:16am MDT