

# \$1,700,000 - 2329 Dowler Pl, Victoria

MLS® #1010673

**\$1,700,000**

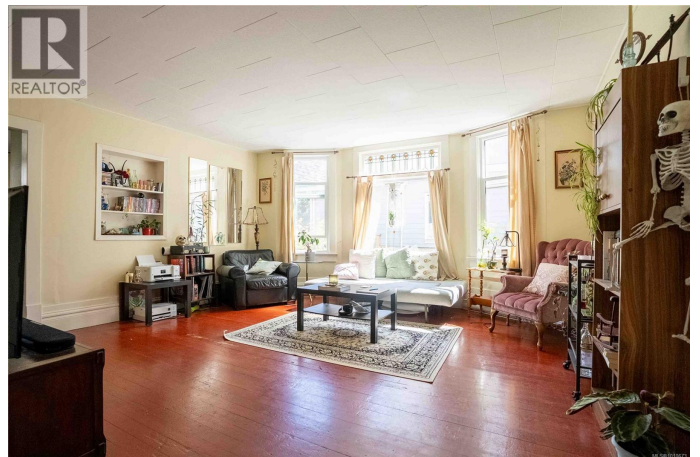
7 Bedroom, 5.00 Bathroom, 4,655 sqft

Single Family on 0.16 Acres

Central Park, Victoria, British Columbia

Welcome to 2329 Dowler Place, a rare offering in the heart of Victoria featuring 6 self-contained suites with a total finished area of 4,422 sq. ft. Situated on a well-maintained property, this multi-family building combines strong rental income potential with a highly desirable location close to parks, shopping, transit, and downtown amenities. The main floor offers two units, including a bright 3-bedroom residence with generous living spaces, dining area, and private deck. The upper level features three additional self-contained bachelor suites, each thoughtfully designed with open-concept layouts. The lower level offers a large 3-bedroom suite with its own kitchen, living room, and laundry, ensuring comfortable long-term tenancy. Plus a separate detached 1-bedroom suite. With 6 individual units ranging from 1 to 3 bedrooms, this property provides flexibility for a diverse tenant mix. The building offers ample natural light, efficient layouts, and multiple outdoor areas, including decks and an enclosed balcony. Updated systems and well-planned common areas add to the appeal. Whether you're an investor seeking steady cash flow, a buyer looking for multi-generational living options, or someone wanting to add a prime property to their portfolio, this property delivers exceptional value in one of Victoria's most accessible neighborhoods. (id:6289)

Built in 1910



## Essential Information

Listing #	1010673
Price	\$1,700,000
Bedrooms	7
Bathrooms	5.00
Square Footage	4,655
Acres	0.16
Year Built	1910
Type	Single Family
Sub-Type	Freehold
Style	Character

## Community Information

Address	2329 Dowler Pl
Subdivision	Central Park
City	Victoria
Province	British Columbia
Postal Code	V8T4H5

## Amenities

Features	Central location, Curb & gutter, Level lot, Irregular lot size, Other
Parking Spaces	2
View	City view

## Interior

Appliances	Refrigerator, Stove, Washer, Dryer
Heating	Other Baseboard heaters
Cooling	None
Fireplace	Yes
# of Fireplaces	1

## Additional Information

Zoning	Multi-Family
--------	--------------

## Listing Details

Listing Office	eXp Realty
----------------	------------



The trademarks MLS®, Multiple Listing Service® and the associated logos are owned by The Canadian Real Estate Association (CREA) and identify the quality of services provided by real estate professionals who are members of CREA. REALTOR®. Member of CREA and more.

Listing information last updated on October 14th, 2025 at 2:01am MDT