

# \$579,000 - 632 1029 View St, Victoria

MLS® #1010881

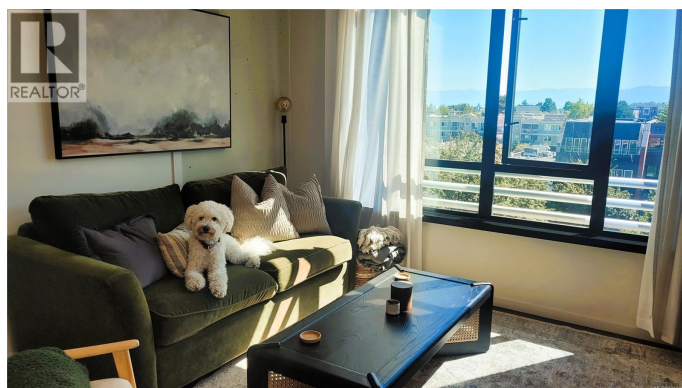
**\$579,000**

1 Bedroom, 1.00 Bathroom, 734 sqft

Single Family on 0.02 Acres

Jukebox Victoria, Victoria, British Columbia

Spectacular Corner Condo in the Iconic Jukebox, in downtown Victoria. Experience elevated urban living in this stunning 1-bedroom residence. Crafted in steel and concrete, this home offers over 700 sq. ft. of bright, open-concept luxury on the 6th floor—prized southwest corner. Soaring over-height ceilings, large windows, and rich hardwood floors set the stage for sun-drenched interiors and sweeping city views. Gourmet kitchen boasts refinished cabinetry, a custom matching bookcase, gleaming quartz countertops, and GE Loft Series appliances. Convenient in-suite laundry and a beautiful bathroom with spa-like finishes. Steps to Victoria's vibrant downtown, with Antique Row, boutique shops, world-class restaurants, and the magnificent Inner Harbour all within walking distance! Fully equipped fitness center, and the serene meditation garden. Secure underground parking, Bike locker and remainder of the New Home Warranty. This is more than a condo—it's a New Lifestyle! (id:6289)



Built in 2019

## Essential Information

|           |           |
|-----------|-----------|
| Listing # | 1010881   |
| Price     | \$579,000 |
| Bedrooms  | 1         |
| Bathrooms | 1.00      |

|                |               |
|----------------|---------------|
| Square Footage | 734           |
| Acres          | 0.02          |
| Year Built     | 2019          |
| Type           | Single Family |
| Sub-Type       | Strata        |
| Style          | Contemporary  |

### Community Information

|             |                  |
|-------------|------------------|
| Address     | 632 1029 View St |
| Subdivision | Jukebox Victoria |
| City        | Victoria         |
| Province    | British Columbia |
| Postal Code | V8V4Y3           |

### Amenities

|                |                  |
|----------------|------------------|
| Features       | Central location |
| Parking Spaces | 1                |
| Parking        | Underground      |
| View           | City view        |

### Interior

|         |                       |
|---------|-----------------------|
| Heating | Forced air, Hot Water |
| Cooling | None                  |

### Additional Information

|        |              |
|--------|--------------|
| Zoning | Multi-Family |
|--------|--------------|

### Listing Details

|                |                       |
|----------------|-----------------------|
| Listing Office | Pemberton Holmes Ltd. |
|----------------|-----------------------|



The trademarks MLS®, Multiple Listing Service® and the associated logos are owned by The Canadian Real Estate Association (CREA) and identify the quality of services provided by real estate professionals who are members of CREA. REALTOR®. Member of CREA and more.

Listing information last updated on October 14th, 2025 at 2:01am MDT