

\$589,500 - 404 935 Johnson St, Victoria

MLS® #1011625

\$589,500

2 Bedroom, 2.00 Bathroom, 1,079 sqft

Single Family on 0.02 Acres

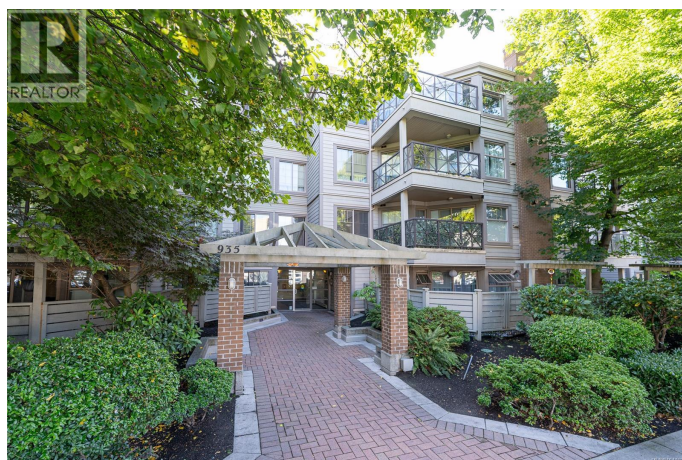
Brookman Place, Victoria, British Columbia

Downtown living at its finest! This updated 2-bedroom, 2-bath condo is ideally located in the heart of Victoria, just steps from shopping, dining, and all amenities. Perched on the top floor and set on the quiet side of the building, it offers peace and privacy with a bright, open layout. The kitchen has been fully renovated with new LG appliances, complemented by a spacious eating area and modern flooring throughout. The living room features a cozy gas fireplace, while the primary bedroom includes a 4-piece ensuite. Freshly painted, the home also boasts in-suite laundry with a new washer/dryer, secure underground parking, storage, and bike storage. Relax or entertain on the large balcony—perfect for a BBQ. With rentals, pets, and all ages welcome, this is an excellent opportunity to enjoy vibrant city living. Book your showing today! (id:6289)

Built in 1994

Essential Information

Listing #	1011625
Price	\$589,500
Bedrooms	2
Bathrooms	2.00
Square Footage	1,079
Acres	0.02
Year Built	1994
Type	Single Family



Sub-Type Strata

Community Information

Address 404 935 Johnson St
Subdivision Brookman Place
City Victoria
Province British Columbia
Postal Code V8V3N5

Amenities

Features Irregular lot size
Parking Spaces 1
View City view, Mountain view

Interior

Appliances Refrigerator, Stove, Washer, Dryer
Heating Electric, Natural gas Baseboard heaters
Cooling None
Fireplace Yes
of Fireplaces 1

Additional Information

Zoning Multi-Family

Listing Details

Listing Office eXp Realty



The trademarks MLS®, Multiple Listing Service® and the associated logos are owned by The Canadian Real Estate Association (CREA) and identify the quality of services provided by real estate professionals who are members of CREA. REALTOR®. Member of CREA and more.

Listing information last updated on October 14th, 2025 at 2:01am MDT