

\$525,000 - 801 1100 Yates St, Victoria

MLS® #1014805

\$525,000

1 Bedroom, 1.00 Bathroom, 487 sqft
Single Family on 0.01 Acres

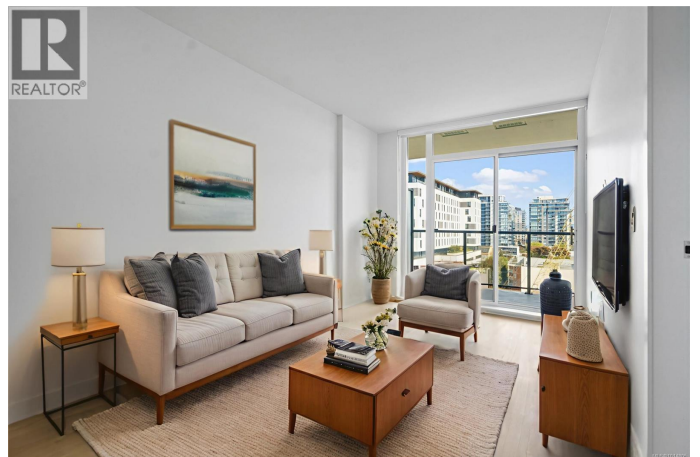
Downtown, Victoria, British Columbia

Secure underground parking adds everyday ease to this 8th floor home at Nest by Chard. Built in 2024 with steel and concrete construction and still under warranty, this west-facing one-bedroom, one-bathroom condo pairs peace of mind with sleek, Scandinavian-inspired design. The open-concept living and dining area seamlessly flows into a private deck, while oversized windows frame stunning sunset views. The kitchen has been elevated with upgrades, including a waterfall quartz countertop, a full-height backsplash, and undercabinet lighting, which complement the integrated Fisher & Paykel appliance package. The 4-piece bath features heated floors and porcelain tile for a spa-like touch. Thoughtful extras include a storage locker, an on-site gym, dog wash station (pet-friendly) and children's play area, fob entry, and bike storage. Ideally located on the edge of downtown, you'll enjoy easy access to Fernwood's charm, Harris Green's energy, and Victoria's best restaurants, caf  s, and shops. (id:6289)

Built in 2024

Essential Information

Listing #	1014805
Price	\$525,000
Bedrooms	1



Bathrooms	1.00
Square Footage	487
Acres	0.01
Year Built	2024
Type	Single Family
Sub-Type	Strata

Community Information

Address	801 1100 Yates St
Subdivision	Downtown
City	Victoria
Province	British Columbia
Postal Code	V8V0H5

Amenities

Parking Spaces	1
Parking	Underground
View	City view

Interior

Heating	Electric Heat Pump
Cooling	Air Conditioned, Fully air conditioned

Additional Information

Zoning	Residential
--------	-------------

Listing Details

Listing Office	RE/MAX Camosun
----------------	----------------



The trademarks MLS®, Multiple Listing Service® and the associated logos are owned by The Canadian Real Estate Association (CREA) and identify the quality of services provided by real estate professionals who are members of CREA. REALTOR®. Member of CREA and more.

Listing information last updated on October 13th, 2025 at 10:31pm MDT