

# \$665,000 - 302 838 Broughton St, Victoria

MLS® #1014976

**\$665,000**

2 Bedroom, 1.00 Bathroom, 911 sqft  
Single Family on 0.02 Acres

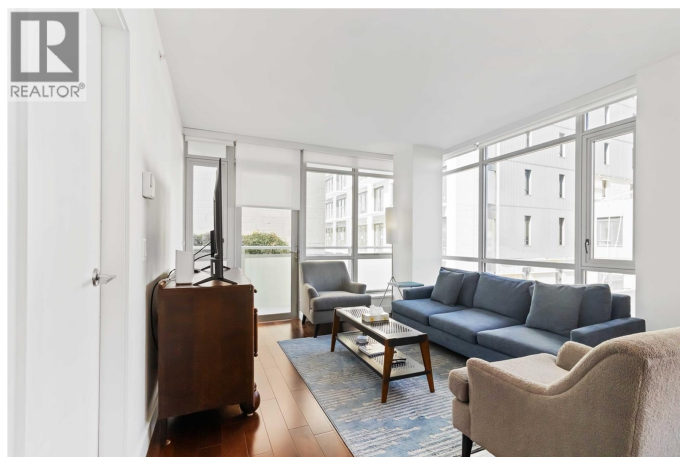
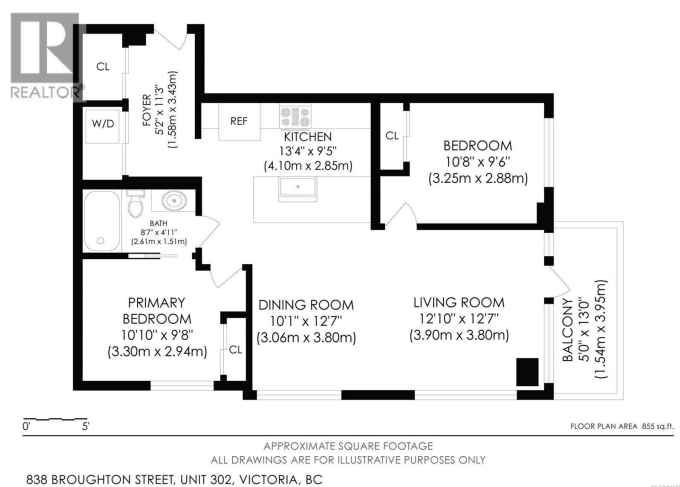
Escher, Victoria, British Columbia

Move-in ready corner unit in a quality Chard Development building on the edge of downtownâ€”close to everything yet tucked away from the bustle. This bright 2-bed, 1-bath home features a smart split-bedroom layout, warm wood floors, and floor-to-ceiling windows. The gourmet kitchen offers quartz counters and a large island, perfect for cooking and entertaining. The sleek bath has dual access, including from the primary suite. A welcoming foyer, in-suite laundry, and secure underground parking add ease. Building amenities include a pet wash, bike repair station, and a rooftop deck with panoramic views for summer BBQs. Walk to the Inner Harbour, Beacon Hill Park, YMCA, shops, and restaurants. Stylish, modern, and pet-friendlyâ€”urban living at its best! (id:6289)

Built in 2017

## Essential Information

Listing #	1014976
Price	\$665,000
Bedrooms	2
Bathrooms	1.00
Square Footage	911
Acres	0.02
Year Built	2017
Type	Single Family
Sub-Type	Strata



## Community Information

Address	302 838 Broughton St
Subdivision	Escher
City	Victoria
Province	British Columbia
Postal Code	V8W1E4

## Amenities

Features	Other
Parking Spaces	1

## Interior

Heating	Electric
Cooling	None

## Additional Information

Zoning	Multi-Family
--------	--------------

## Listing Details

Listing Office	RE/MAX Camosun
----------------	----------------



The trademarks MLS®, Multiple Listing Service® and the associated logos are owned by The Canadian Real Estate Association (CREA) and identify the quality of services provided by real estate professionals who are members of CREA. REALTOR®. Member of CREA and more.

Listing information last updated on October 13th, 2025 at 11:01pm MDT