

# \$349,900 - 609 835 View St, Victoria

MLS® #1015839

**\$349,900**

1 Bedroom, 1.00 Bathroom, 455 sqft

Single Family on 0.01 Acres

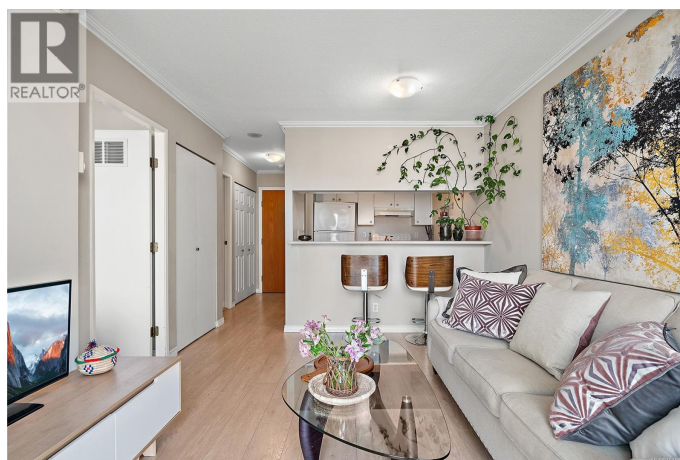
The Metropolitan, Victoria, British Columbia

Experience the pulse of downtown Victoria in a fabulous location. This 449 square foot, one-bedroom suite at the Metropolitan, a well-maintained steel and concrete building in the heart of Victoria, features a well-designed floor plan that maximizes space. It includes new flooring, mirrored closet doors, a spacious bathroom with new tile, tub and vanity, A fantastic feature is the in-suite laundry with a stackable washer and dryer. The building has been recently refreshed with fully updated plumbing and brand-new elevators. Located steps from vibrant caf  s, restaurants, the Inner Harbour, historic Old Town, and Beacon Hill Park, this is an ideal home for those who love city life. With low strata fees, pets and rentals permitted, this is one of the best deals available! (id:6289)

Built in 1994

## Essential Information

Listing #	1015839
Price	\$349,900
Bedrooms	1
Bathrooms	1.00
Square Footage	455
Acres	0.01
Year Built	1994
Type	Single Family
Sub-Type	Strata



## Community Information

Address	609 835 View St
Subdivision	The Metropolitan
City	Victoria
Province	British Columbia
Postal Code	V8W3W8

## Amenities

Features	Curb & gutter
Parking	Underground
View	City view

## Interior

Heating	Electric Baseboard heaters
Cooling	None

## Additional Information

Zoning	Residential
--------	-------------

## Listing Details

Listing Office	Coldwell Banker Oceanside Real Estate
----------------	---------------------------------------



The trademarks MLS®, Multiple Listing Service® and the associated logos are owned by The Canadian Real Estate Association (CREA) and identify the quality of services provided by real estate professionals who are members of CREA. REALTOR®. Member of CREA and more.

Listing information last updated on October 13th, 2025 at 9:31pm MDT