

\$1,749,900 - 1402 / 1404 Inkar Road Lot# 1 & 2, Kelowna

MLS® #10321955

\$1,749,900

5 Bedroom, 3.00 Bathroom, 1,435 sqft

Single Family on 0.41 Acres

Springfield/Spall, Kelowna, British Columbia

Huge value in the land, with this Development Opportunity. This location in the Capri-Landmark neighbourhood is near Gordon Drive, and Springfield Road. This area is an employment hub and an opportunity for development. The blueprint for the

Capri-Landmark Urban Centre Plan includes:

1. Strategic Redevelopment guidelines including the placement of parks, public spaces & a vibrant urban centre. 2.

High-Density Living: Capri-Landmark is poised to evolve from predominantly single-family residences to a high-density housing hub.

Imagine modern apartments, bustling commercial spaces & improved transportation networks converging in one dynamic locale.

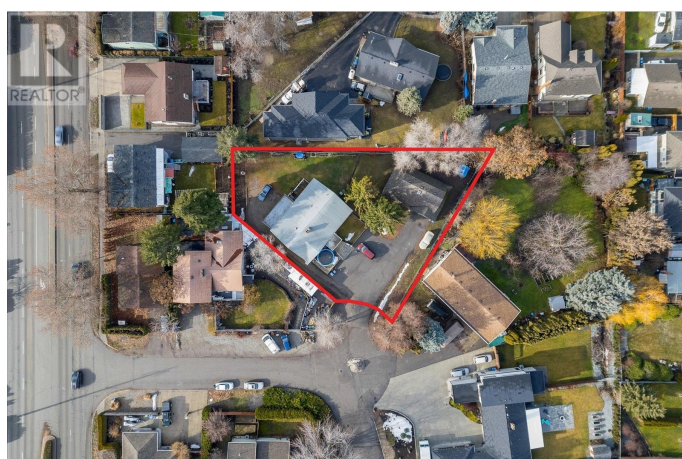
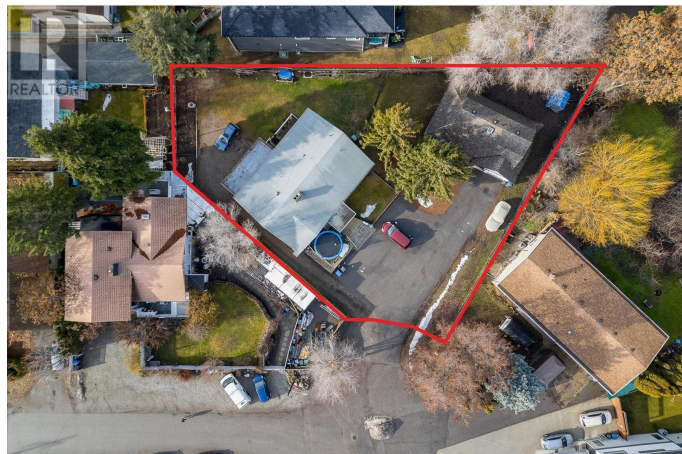
This lot may be able to accommodate 10 units X 3 bedrooms with rooftop patios, according to IH Design (see attached, buyer to do own due diligence). Immense potential here! Ask for our construction quote available from Vision 1 Steel Corporation for pre-fab build costs.

(id:6289)

Built in 1969

Essential Information

Listing #	10321955
Price	\$1,749,900
Bedrooms	5
Bathrooms	3.00
Square Footage	1,435



Acres	0.41
Year Built	1969
Type	Single Family
Sub-Type	Freehold

Community Information

Address	1402 / 1404 Inkar Road Lot# 1 & 2
Subdivision	Springfield/Spall
City	Kelowna
Province	British Columbia
Postal Code	V1Y8H7

Amenities

Utilities	Electricity, Sewer
Parking Spaces	6

Interior

Heating	Electric See remarks
# of Stories	1

Exterior

Exterior	Other
Roof	Asphalt shingle

Additional Information

Zoning	Unknown
--------	---------

Listing Details

Listing Office	Coldwell Banker Horizon Realty
----------------	--------------------------------



The trademarks MLS®, Multiple Listing Service® and the associated logos are owned by The Canadian Real Estate Association (CREA) and identify the quality of services provided by real estate professionals who are members of CREA. REALTOR®. Member of CREA and more.

Listing information last updated on October 13th, 2025 at 1:01pm MDT