

\$739,000 - 815 Graham Road, Kelowna

MLS® #10330606

\$739,000

4 Bedroom, 2.00 Bathroom, 1,788 sqft

Single Family on 0.22 Acres

Rutland South, Kelowna, British Columbia

This home is ready for your ideas! Located next to Quigley Elementary School, this property offers the perfect opportunity for investors or buyers looking to customize their dream home. Situated in a desirable location, you're just a short drive to Orchard Park Shopping Mall, Costco, and all the conveniences of shopping in Rutland. Great potential and a prime location, this home is an ideal choice for those wanting to put their own stamp on a property while being close to everything you need. Call to book your private viewing today! (id:6289)

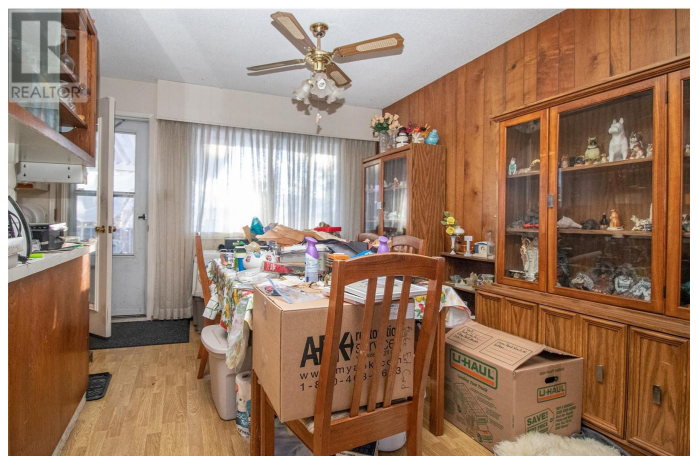
Built in 1971

Essential Information

Listing #	10330606
Price	\$739,000
Bedrooms	4
Bathrooms	2.00
Square Footage	1,788
Acres	0.22
Year Built	1971
Type	Single Family
Sub-Type	Freehold

Community Information

Address	815 Graham Road
Subdivision	Rutland South
City	Kelowna



Province British Columbia
Postal Code V1X1J3

Amenities

Parking Spaces 5
Parking Carport, RV, See Remarks
of Garages 1

Interior

Heating Forced air, See remarks
of Stories 2

Additional Information

Zoning Unknown

Listing Details

Listing Office Royal LePage Kelowna



The trademarks MLS®, Multiple Listing Service® and the associated logos are owned by The Canadian Real Estate Association (CREA) and identify the quality of services provided by real estate professionals who are members of CREA. REALTOR®. Member of CREA and more.

Listing information last updated on October 13th, 2025 at 1:01pm MDT