

\$989,900 - 1550 Union Road Unit# 44, Kelowna

MLS® #10338109

\$989,900

3 Bedroom, 3.00 Bathroom, 3,511 sqft

Single Family on 1.00 Acres

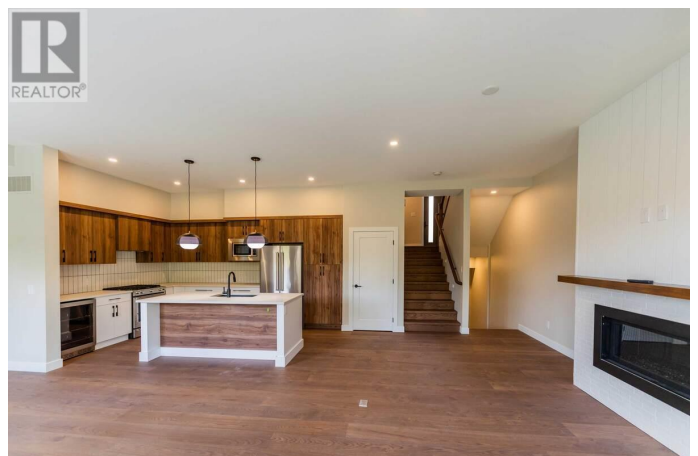
Pondside Landing, Kelowna, British Columbia

For more information, please click Brochure button. Discover the Elderberry TH44 at Wildenâ€™s Pondside Landing, a 2,626 sq. ft. townhouse showcasing a Warm Nordic colour scheme with direct water views. Only 10 minutes from downtown Kelowna and the airport, this vibrant community features scenic trails, plus the future Wilden Market Square and Wilden Elementary School just steps away. The split-level design offers abundant natural light, 3 bedrooms, a study, and 3 bathrooms. Enjoy three outdoor areas: a spacious deck off the main level, another off the secluded primary suite (with 5-piece ensuite and walk-in closet), and a covered patio off the walkout basement. The bright living area boasts a gas fireplace, while the lower level includes two bedrooms and a family room opening to the patio. A side-by-side double garage connects to a handy laundry room. Ceiling heights range from 9â€™ in the walkout basement, 10â€™ on the main floor, 8â€™ in the upper bedroom, and 11â€™ in the study. (id:6289)

Built in 2022

Essential Information

Listing #	10338109
Price	\$989,900
Bedrooms	3
Bathrooms	3.00



Half Baths	1
Square Footage	3,511
Acres	1.00
Year Built	2022
Type	Single Family
Sub-Type	Strata
Style	Contemporary

Community Information

Address	1550 Union Road Unit# 44
Subdivision	Pondside Landing
City	Kelowna
Province	British Columbia
Postal Code	V1V0G9

Amenities

Amenities	Airport, Park, Schools, Shopping, Ski area
Utilities	Cable, Electricity, Natural Gas, Telephone, Sewer, Water
Features	Cul-de-sac, Private setting, Central island, Two Balconies
Parking Spaces	2
Parking	Attached Garage
# of Garages	2
View	City view, Mountain view, View of water

Interior

Appliances	Range, Refrigerator, Dishwasher, Dryer, Range - Gas, Hot Water Instant, Microwave, Hood Fan, Washer, Washer & Dryer, Wine Fridge
Heating	Geo Thermal Heat Pump
Cooling	See Remarks, Heat Pump
Fireplace	Yes
# of Fireplaces	1
Fireplaces	Unknown
# of Stories	5

Exterior

Exterior	Stone, Stucco, Other
Exterior Features	Landscaped
Roof	Asphalt shingle

Additional Information

Zoning

Multi-Family

Listing Details

Listing Office

Easy List Realty



The trademarks MLS®, Multiple Listing Service® and the associated logos are owned by The Canadian Real Estate Association (CREA) and identify the quality of services provided by real estate professionals who are members of CREA. REALTOR®. Member of CREA and more.

Listing information last updated on October 13th, 2025 at 10:46am MDT