

# \$984,500 - 1331 Belaire Avenue, Kelowna

MLS® #10338591

**\$984,500**

5 Bedroom, 3.00 Bathroom, 1,884 sqft  
Single Family on 0.11 Acres

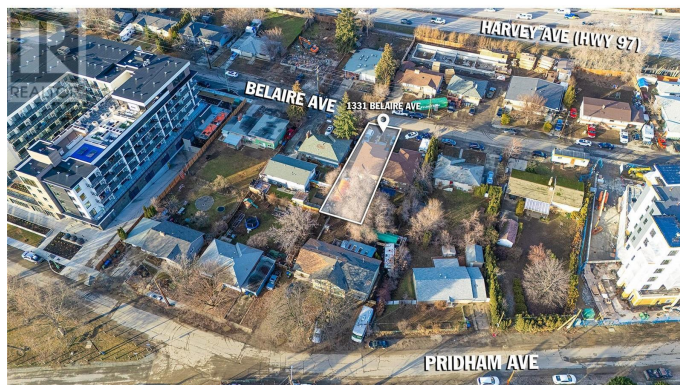
Springfield/Spall, Kelowna, British Columbia

Capri-Landmark! One of Kelowna's™s  
Largest Activity Hubs! Urban Centre UC2  
Zoned! Excellent holding/investment properties  
for future assembly development. Official  
Community Plan has a 12-story height  
designation and a UC2 Capri Landmark  
Zoning Bylaw with a base 3.3 FAR. See  
Zoning Bylaw Section 14.14. High Density,  
Growing Urban Residential Area with multiple  
transit routes, high walking and biking scores,  
nearby retail, businesses, services, shopping,  
schools, amenities and more. At present, there  
are 5 connected properties listed for sale  
totaling .55 of an Acre with a combined list  
price of \$4,985,000. UC2 zoning supports a  
variety of mixed-use development  
opportunities including retail, office and  
residential. Belaire/Pridham Avenue is  
currently active with new developments  
reshaping the much-anticipated form, function  
and residential growth in this vibrant urban  
center neighborhood. (id:6289)

Built in 1970

## Essential Information

Listings #	10338591
Price	\$984,500
Bedrooms	5
Bathrooms	3.00
Half Baths	2
Square Footage	1,884



Acres	0.11
Year Built	1970
Type	Single Family
Sub-Type	Freehold
Style	Ranch

### Community Information

Address	1331 Belaire Avenue
Subdivision	Springfield/Spall
City	Kelowna
Province	British Columbia
Postal Code	V1Y6B8

### Amenities

Parking Spaces	2
Parking	Other
View	Mountain view, View (panoramic)

### Interior

Heating	Forced air, See remarks
# of Stories	1

### Exterior

Exterior	Stone, Vinyl siding, Wood siding
Roof	Asphalt shingle

### Additional Information

Zoning	Unknown
--------	---------

### Listing Details

Listing Office	RE/MAX Kelowna
----------------	----------------



The trademarks MLS®, Multiple Listing Service® and the associated logos are owned by The Canadian Real Estate Association (CREA) and identify the quality of services provided by real estate professionals who are members of CREA. REALTOR®. Member of CREA and more.

Listing information last updated on October 13th, 2025 at 10:46am MDT