

\$999,900 - 483 O'keefe Court, Kelowna

MLS® #10340965

\$999,900

6 Bedroom, 3.00 Bathroom, 2,100 sqft

Single Family on 0.21 Acres

Rutland North, Kelowna, British Columbia

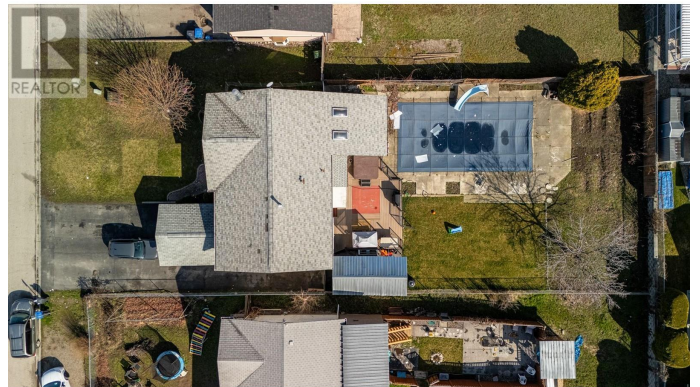
Fantastic investment and development opportunity at 483 O'Keefe Court, situated in the desirable Rutland area of Kelowna, BC. This spacious property is zoned MF1 and offers fast-track eligibility, allowing permit approval in as little as 10 days for the construction of 4-6 residential units. The lot measures 60 feet by 154.5 feet, providing ample space for your next multifamily project. The existing home boasts 6 bedrooms, offering significant potential as either a family residence or rental property. A 3-bedroom basement suite generates excellent rental income, providing immediate financial benefit while planning future development. Centrally located in Rutland, the property enjoys close proximity to schools, parks, shopping, and transit routes, making it ideal for attracting future tenants or homeowners, located just steps from grocery stores, restaurants, schools, and public transit, with a short drive to the YMCA, UBCO campus, and Kelowna International Airport. Don't miss this rare opportunity to secure a prime development lot with substantial income-generating potential. (id:6289)

Built in 1980

Essential Information

Listing # 10340965

Price \$999,900



Bedrooms	6
Bathrooms	3.00
Half Baths	1
Square Footage	2,100
Acres	0.21
Year Built	1980
Type	Single Family
Sub-Type	Freehold

Community Information

Address	483 O'keefe Court
Subdivision	Rutland North
City	Kelowna
Province	British Columbia
Postal Code	V1X6B1

Amenities

Amenities	Golf Nearby, Park, Recreation, Schools
Features	Cul-de-sac, Level lot
Parking Spaces	5
Parking	Attached Garage
# of Garages	1
Has Pool	Yes
Pool	Inground pool, Outdoor pool, Pool

Interior

Appliances	Refrigerator, Dishwasher, Dryer, Range - Gas, Washer
Heating	Forced air, See remarks
Cooling	Central air conditioning
Fireplace	Yes
# of Fireplaces	1
# of Stories	2

Exterior

Exterior Features	Landscaped, Level
Roof	Asphalt shingle

Additional Information

Zoning	Multi-Family
--------	--------------

Listing Details

Listing Office eXp Realty (Kelowna)



The trademarks MLS®, Multiple Listing Service® and the associated logos are owned by The Canadian Real Estate Association (CREA) and identify the quality of services provided by real estate professionals who are members of CREA. REALTOR®. Member of CREA and more.

Listing information last updated on October 13th, 2025 at 10:46am MDT