

\$1,164,000 - 2542 Pinnacle Ridge Drive, West Kelowna

MLS® #10343411

\$1,164,000

6 Bedroom, 3.00 Bathroom, 2,996 sqft

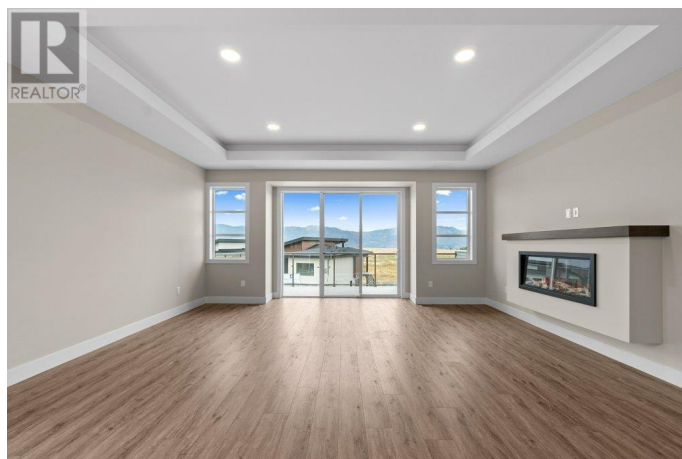
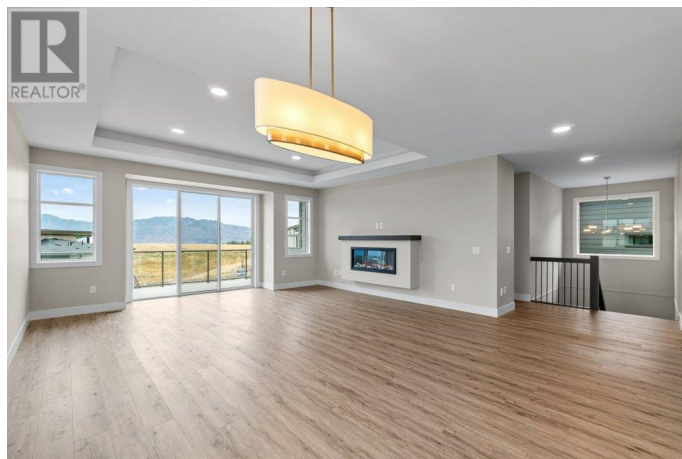
Single Family on 0.15 Acres

Shannon Lake, West Kelowna, British Columbia

Discover this exceptional new home by Old School Construction, located in the highly sought-after, family-oriented community of Tallus Ridge. Thoughtfully designed with a bright, open-concept layout, this home is filled with natural light and showcases mountain views from the front sundeck, easily accessed through the spacious great room. The gourmet kitchen is ideal for entertaining, featuring quartz countertops, ample cabinetry, and convenient access to a covered back deck equipped with a gas BBQ hookup—perfect for enjoying the private backyard and tranquil vineyard views. The primary bedroom offers a peaceful retreat, complete with a large walk-in closet and a luxurious 4-piece ensuite featuring dual sinks and a custom-tiled shower. Two additional bedrooms and a conveniently located laundry room complete this floor. Downstairs, the finished basement includes a versatile den and a great 919 sq ft legal 2-bedroom suite—ideal for extended family, guests, or rental income. Meticulously landscaped and outfitted with underground sprinklers for easy maintenance, this home combines comfort, functionality, and style in one of West Kelowna's most desirable neighborhoods. (id:6289)

Built in 2025

Essential Information



Listing #	10343411
Price	\$1,164,000
Bedrooms	6
Bathrooms	3.00
Square Footage	2,996
Acres	0.15
Year Built	2025
Type	Single Family
Sub-Type	Freehold

Community Information

Address	2542 Pinnacle Ridge Drive
Subdivision	Shannon Lake
City	West Kelowna
Province	British Columbia
Postal Code	V4T0E3

Amenities

Amenities	Golf Nearby, Park, Schools
Features	Central island, Balcony
Parking Spaces	4
Parking	Attached Garage
# of Garages	2

Interior

Heating	Forced air, See remarks
Cooling	Central air conditioning
Fireplace	Yes
# of Fireplaces	1
Fireplaces	Electric
# of Stories	2

Exterior

Exterior	Stone, Other
Roof	Asphalt shingle

Additional Information

Zoning	Unknown
--------	---------

Listing Details

Listing Office

RE/MAX Kelowna



The trademarks MLS®, Multiple Listing Service® and the associated logos are owned by The Canadian Real Estate Association (CREA) and identify the quality of services provided by real estate professionals who are members of CREA. REALTOR®. Member of CREA and more.

Listing information last updated on October 13th, 2025 at 2:46pm MDT