

# \$1,650,000 - 750 Glenmore Drive, Kelowna

MLS® #10343490

**\$1,650,000**

5 Bedroom, 3.00 Bathroom, 2,494 sqft

Single Family on 0.24 Acres

Glenmore, Kelowna, British Columbia

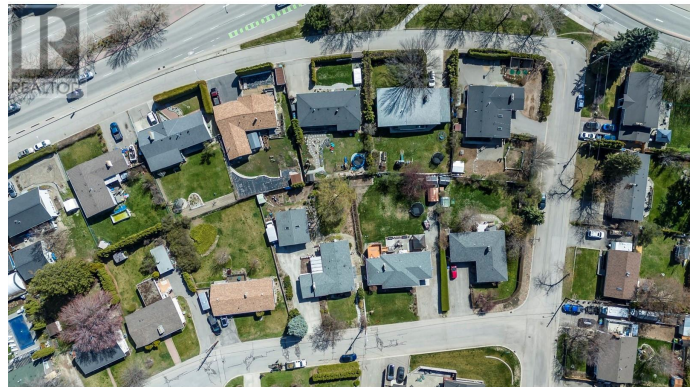
## EXCITING DEVELOPMENT OPPORTUNITY!

Prime corner location at Glenmore Drive and High Road offers a 1.4-acre land assembly opportunity. Potential for a 6-story residential building with ground-level commercial upon rezone to MF3 Zoning. Strategically positioned on a transit supportive corridor with easy access to downtown Kelowna, UBC Okanagan, and Kelowna International Airport. Walking distance to Knox Mountain and Kelowna Golf and Country Club. Stunning views of Knox Mountain and Dilworth Cliffs enhance its desirability. Must be acquired alongside other properties for comprehensive development. A premium prospect boasting accessibility to key amenities and promising returns. (id:6289)

Built in 1963

## Essential Information

Listings #	10343490
Price	\$1,650,000
Bedrooms	5
Bathrooms	3.00
Square Footage	2,494
Acres	0.24
Year Built	1963
Type	Single Family
Sub-Type	Freehold
Style	Ranch



## Community Information

Address	750 Glenmore Drive
Subdivision	Glenmore
City	Kelowna
Province	British Columbia
Postal Code	V1Y4N8

## Amenities

Amenities	Golf Nearby, Public Transit, Airport, Park, Recreation, Schools, Shopping
Parking Spaces	1
Parking	Attached Garage, Carport
# of Garages	2

## Interior

Heating	Forced air
Cooling	Central air conditioning
# of Stories	2

## Additional Information

Zoning	Unknown
--------	---------

## Listing Details

Listing Office	Royal LePage Kelowna
----------------	----------------------



The trademarks MLS®, Multiple Listing Service® and the associated logos are owned by The Canadian Real Estate Association (CREA) and identify the quality of services provided by real estate professionals who are members of CREA. REALTOR®. Member of CREA and more.

Listing information last updated on October 13th, 2025 at 10:46am MDT