

\$399,900 - 2102 Pine Tree Road Unit# 52, Invermere

MLS® #10348443

\$399,900

2 Bedroom, 2.00 Bathroom, 854 sqft
Single Family on 1.00 Acres

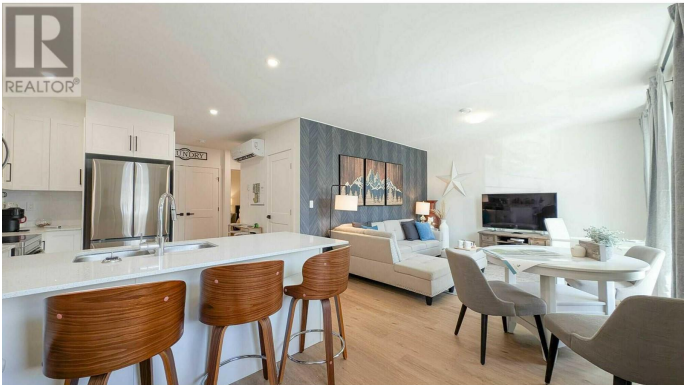
N/A, Invermere, British Columbia

Visit REALTOR website for additional information. Own a brand-new home in Invermere's sought-after Pine Tree Valley. This stylish 2-bed, 2-bath home offers modern open-concept living with quartz counters, smart appliances, energy-efficient features, and ductless A/C. Enjoy a private patio, exterior storage, and secure bike storage. Ready by early September, this home is ideally located near the new daycare, preschool, and Legacy Trail-perfect for families, first-time buyers, or downsizers. Backed by a full new home warranty. Near Windermere Lake and a short drive to Panorama Mountain Village, enjoy year-round outdoor activities boating, skiing, biking, hiking, golf, and more. Invermere offers essential services, shopping, beaches, parks, and schools. (id:6289)

Built in 2025

Essential Information

Listing #	10348443
Price	\$399,900
Bedrooms	2
Bathrooms	2.00
Square Footage	854
Acres	1.00
Year Built	2025
Type	Single Family



Sub-Type	Strata
Style	Other

Community Information

Address	2102 Pine Tree Road Unit# 52
Subdivision	N/A
City	Invermere
Province	British Columbia
Postal Code	V0A1K4

Amenities

Amenities	Golf Nearby, Recreation, Schools, Shopping, Ski area
Parking Spaces	1
View	Mountain view

Interior

Appliances	Range, Refrigerator, Dishwasher, Dryer, Microwave, Washer
Heating	Electric Baseboard heaters, Heat Pump
Cooling	Heat Pump
# of Stories	1

Exterior

Exterior	Other
Exterior Features	Landscaped
Roof	Asphalt shingle
Foundation	Insulated Concrete Forms

Additional Information

Zoning	Residential
--------	-------------

Listing Details

Listing Office	PG Direct Realty Ltd.
----------------	-----------------------



The trademarks MLS®, Multiple Listing Service® and the associated logos are owned by The Canadian Real Estate Association (CREA) and identify the quality of services provided by real estate professionals who are members of CREA. REALTOR®. Member of CREA and more.

Listing information last updated on October 14th, 2025 at 3:16am MDT