

\$999,000 - 2030 Wilkinson Street, Kelowna

MLS® #10348723

\$999,000

3 Bedroom, 1.00 Bathroom, 1,065 sqft
Single Family on 0.15 Acres

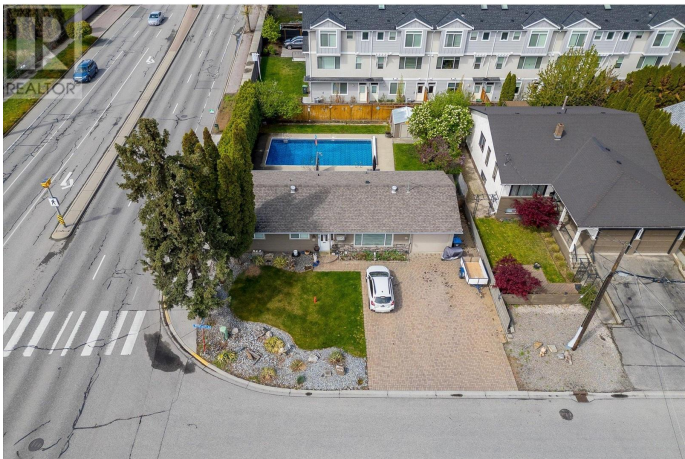
Springfield/Spall, Kelowna, British Columbia

This flat, corner-lot, 0.15Acre property, in the Capri/Landmark Urban area is perfect for its next great use. 1 of a 2 property possible LAND ASSEMBLY. Buy separately or there is an OPTION to purchase the adjoining lot as a land assembly that is for sale at 2024 Wilkinson. Have the flexibility to build the size needed for the immediate area. This corner lot faces Springfield, offering multiple opportunities for redevelopment. Bus route out the door, and inside the sought-after UC2 core area for development. Bring your ideas! This Urban Centre Zoning allows 4-6 story apartments, Townhomes/apartment combo. Close proximity to all major amenities, grocery stores, schools, restaurants, Kelowna downtown, and easy access to Highway 97. Conceptual plan for 16 units with on-grade parking* (id:6289)

Built in 1962

Essential Information

Listing #	10348723
Price	\$999,000
Bedrooms	3
Bathrooms	1.00
Square Footage	1,065
Acres	0.15
Year Built	1962
Type	Single Family



Sub-Type	Freehold
Style	Ranch

Community Information

Address	2030 Wilkinson Street
Subdivision	Springfield/Spall
City	Kelowna
Province	British Columbia
Postal Code	V1Y3Z8

Amenities

Parking Spaces	5
Parking	Attached Garage
# of Garages	1
Has Pool	Yes
Pool	Inground pool

Interior

Heating	Overhead Heaters
Cooling	Wall unit
# of Stories	1

Additional Information

Zoning	Unknown
--------	---------

Listing Details

Listing Office	Coldwell Banker Horizon Realty
----------------	--------------------------------



The trademarks MLS®, Multiple Listing Service® and the associated logos are owned by The Canadian Real Estate Association (CREA) and identify the quality of services provided by real estate professionals who are members of CREA. REALTOR®. Member of CREA and more.

Listing information last updated on October 13th, 2025 at 8:31am MDT