

\$650,000 - 930 Stagecoach Drive Unit# 17, Kamloops

MLS® #10351453

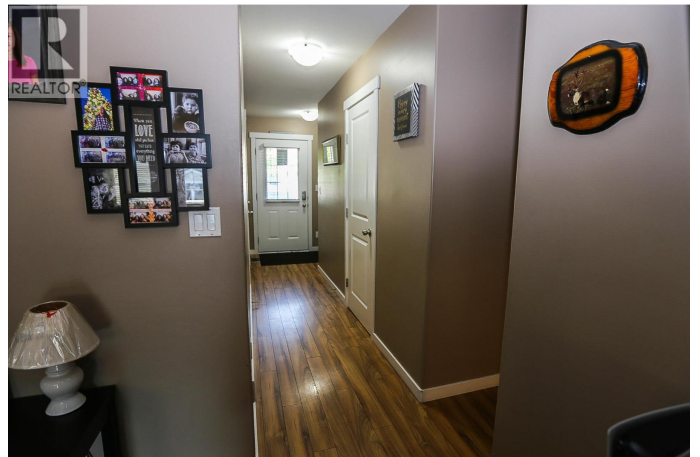
\$650,000

4 Bedroom, 3.00 Bathroom, 1,649 sqft

Single Family on 1.00 Acres

The Ridge, Kamloops, British Columbia

Nestled in the highly sought-after Bachelor Heights community, this spacious 4-bedroom, 2.5-bath townhouse offers an exceptional combination of comfort, functionality, and style. The open-concept main floor seamlessly integrates the living, dining, and kitchen areas, creating a bright and welcoming environment that is ideal for both entertaining and day-to-day living. From the main level, step out onto the deck to enjoy sweeping valley and mountain views, a perfect setting for outdoor dining and relaxation. The upper floor is thoughtfully designed, featuring a generous primary suite with a walk-in closet and a full ensuite bath. Two additional bedrooms and a well-appointed 4-piece main bathroom provide comfortable accommodations for family or guests. The finished basement enhances the home's versatility, offering a fourth bedroom, utility room, and a combined family and laundry room with walk-out access to the fully fenced backyard. A side gate provides easy access from the yard to the front of the property. Additional features include central air conditioning, a single-car garage, and an economical bare land strata permitting pets and rentals (with restrictions). Guest parking is available. Stagecoach Park is nearby, offering convenient access to green space and recreation. All measurements are approximate and should be verified if important. Quick possession is available, making this a rare opportunity to move in and enjoy right away—book your showing today. (id:6289)



Built in 2007

Essential Information

| | |
|----------------|-------------------|
| Listing # | 10351453 |
| Price | \$650,000 |
| Bedrooms | 4 |
| Bathrooms | 3.00 |
| Half Baths | 1 |
| Square Footage | 1,649 |
| Acres | 1.00 |
| Year Built | 2007 |
| Type | Single Family |
| Sub-Type | Strata |
| Style | Split level entry |

Community Information

| | |
|-------------|-------------------------------|
| Address | 930 Stagecoach Drive Unit# 17 |
| Subdivision | The Ridge |
| City | Kamloops |
| Province | British Columbia |
| Postal Code | V2B0A9 |

Amenities

| | |
|----------------|-----------------|
| Parking Spaces | 1 |
| Parking | Attached Garage |
| # of Garages | 1 |

Interior

| | |
|--------------|--------------------------|
| Heating | Forced air, See remarks |
| Cooling | Central air conditioning |
| # of Stories | 3 |

Exterior

| | |
|------|-----------------|
| Roof | Asphalt shingle |
|------|-----------------|

Additional Information

| | |
|--------|---------|
| Zoning | Unknown |
|--------|---------|

Listing Details

| | |
|----------------|---------------------------------|
| Listing Office | Royal LePage Westwin (Barriere) |
|----------------|---------------------------------|



The trademarks MLS®, Multiple Listing Service® and the associated logos are owned by The Canadian Real Estate Association (CREA) and identify the quality of services provided by real estate professionals who are members of CREA. REALTOR®. Member of CREA and more.

Listing information last updated on October 13th, 2025 at 8:31pm MDT