

# \$919,900 - 2835 Canyon Crest Drive Unit# 7, West Kelowna

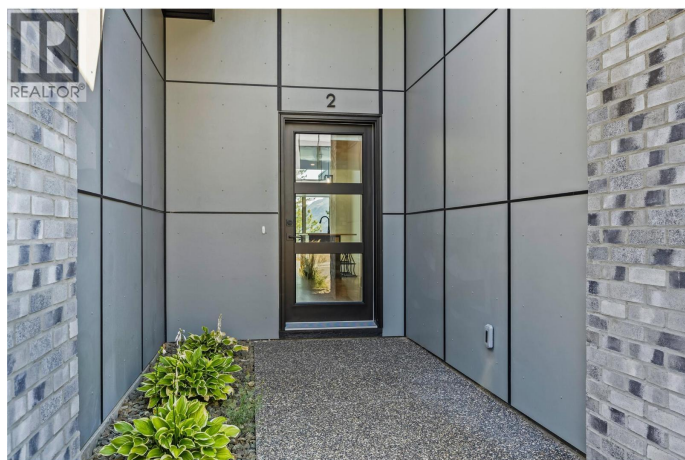
MLS® #10353449

**\$919,900**

2 Bedroom, 3.00 Bathroom, 2,418 sqft  
Single Family on 1.00 Acres

Edge View, West Kelowna, British Columbia

Brand New, MOVE IN NOW Townhome with the best value in West Kelowna! Rancher Walk-Out with LAKE VIEWS and \$14,400 in upgrades included, such as quartz counters throughout, in-floor heating in ensuite, tile fireplace, under-cabinet lighting in kitchen, and gas bbq hook-up on patio. Plus, move in NOW! Brand New build. Save the PTT (savings of approx \$16,398 - conditions apply). Welcome to Edge View at Tallus Ridge, the best value townhome community in West Kelowna. Home #7 is an ideal floorplan with primary bedroom on the main floor, a spacious deck off the living room with views of Shannon Lake. Downstairs offers plenty of options with a family room, bedroom, den and flex space. Plus enjoy the convenience of a side-by-side garage. Advanced noise-canceling Logix ICF Blocks built into the party wall for superior durability and insulation. 1-2-5-10 Year New Home Warranty, meets Step 4 of BC's Energy Step Code. Shannon Lake is a 5-minute drive to West Kelowna shopping, restaurants, entertainment, and close to top-rated schools. Escape to nature with a small fishing lake, family-friendly golf course & plenty of hiking/biking trails. Showhome Now Open Saturdays 12-3pm. (id:6289)



Built in 2025

## Essential Information

Listing #	10353449
Price	\$919,900
Bedrooms	2
Bathrooms	3.00
Half Baths	1
Square Footage	2,418
Acres	1.00
Year Built	2025
Type	Single Family
Sub-Type	Strata
Style	Ranch

### Community Information

Address	2835 Canyon Crest Drive Unit# 7
Subdivision	Edge View
City	West Kelowna
Province	British Columbia
Postal Code	V4T0E3

### Amenities

Features	One Balcony
Parking Spaces	2
Parking	Attached Garage
# of Garages	2
View	Lake view, Mountain view

### Interior

Appliances	Refrigerator, Dishwasher, Dryer, Range - Gas, Washer
Heating	Forced air, See remarks
Cooling	Central air conditioning
Fireplace	Yes
# of Fireplaces	1
Fireplaces	Gas
# of Stories	2

### Exterior

Exterior	Brick, Other
Roof	Asphalt shingle

### Additional Information

Zoning

Unknown

## Listing Details

Listing Office

RE/MAX Kelowna



The trademarks MLS®, Multiple Listing Service® and the associated logos are owned by The Canadian Real Estate Association (CREA) and identify the quality of services provided by real estate professionals who are members of CREA. REALTOR®. Member of CREA and more.

Listing information last updated on October 13th, 2025 at 2:31pm MDT