

\$739,500 - 722 Coopland Crescent Unit# 2, Kelowna

MLS® #10354002

\$739,500

3 Bedroom, 3.00 Bathroom, 1,293 sqft

Single Family on 1.00 Acres

COOPLAND CRESCENT, Kelowna, British Columbia

Fabulous well location!! Walk to school, Pandosy Village or the beach! In the centre of Pandosy! Great 3 bedroom and 2.5 bathroom corner TOWNHOME in Fourplex with 1293 sq.ft., outdoor patio facing garage. Ideal for young families or investors. An open main level includes 9ft ceilings and built-in fireplace, large centre island, stainless steel appliances and great room concept. Powder room on the main floor, upstairs there are 3 bedrooms, 2 bathrooms and laundry. Great opportunity for INVESTORS and BUYERS. Enjoy this great location. Well priced! (id:6289)

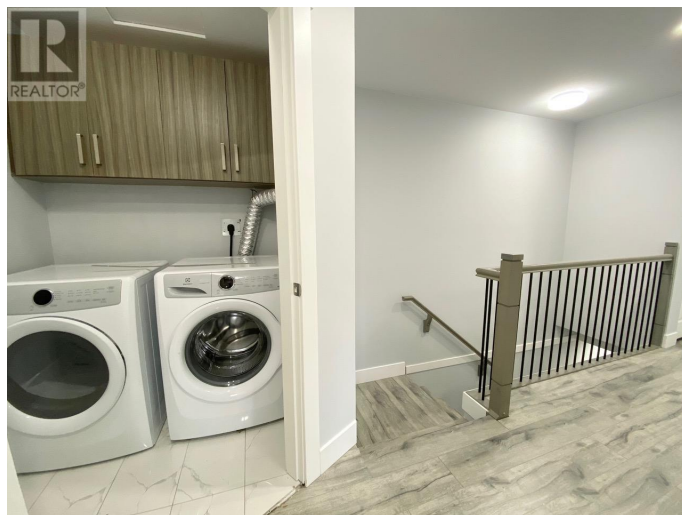
Built in 2020

Essential Information

Listing #	10354002
Price	\$739,500
Bedrooms	3
Bathrooms	3.00
Half Baths	1
Square Footage	1,293
Acres	1.00
Year Built	2020
Type	Single Family
Sub-Type	Strata

Community Information

Address 722 Coopland Crescent Unit# 2



Subdivision	COOPLAND CRESCENT
City	Kelowna
Province	British Columbia
Postal Code	V1Y2V1

Amenities

Parking Spaces	1
Parking	Attached Garage
# of Garages	1

Interior

Appliances	Refrigerator, Dishwasher, Dryer, Range - Electric, Washer
Heating	Electric Forced air
Fireplace	Yes
# of Fireplaces	1
Fireplaces	Electric
# of Stories	2

Exterior

Exterior	Other
Roof	Asphalt shingle

Additional Information

Zoning	Multi-Family
--------	--------------

Listing Details

Listing Office	Keller Williams Ocean Realty
----------------	------------------------------



The trademarks MLS®, Multiple Listing Service® and the associated logos are owned by The Canadian Real Estate Association (CREA) and identify the quality of services provided by real estate professionals who are members of CREA. REALTOR®. Member of CREA and more.

Listing information last updated on October 13th, 2025 at 10:46am MDT