

\$495,000 - 2551 Shoreline Drive Unit# 204, Lake Country

MLS® #10354201

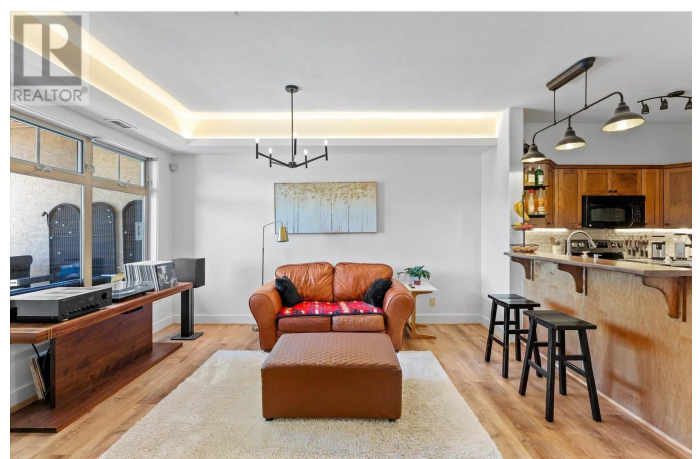
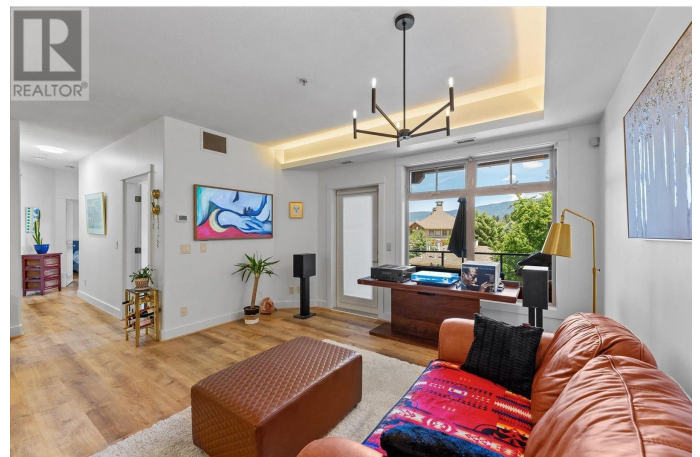
\$495,000

2 Bedroom, 2.00 Bathroom, 983 sqft

Single Family on 1.00 Acres

Sitara on the Pond, Lake Country, British Columbia

Modern 2 bed, 2 bath + Den This beautiful 2 bed + den (or 3rd bedroom) home offers peaceful surroundings, modern updates, and unbeatable convenience at Lake Country's Sitara on the Pond. Enjoy an open-concept layout with a breakfast bar and seamless flow into the bright dining area and living room. Recent updates include new flooring, fresh paint, modern lighting and a new HVAC & heat pump unitâ€”move-in ready! The private deck overlooks Pollardâ€™s Pond (turned ice-skating rink in winter!) and the large poolâ€”perfect for relaxing morning coffee with serene views. The primary suite offers resort-style ease with plenty of space, natural light, and ensuite access. The second bedroom is spacious with access to the second full bath. Features include in-suite laundry, central heating/cooling, 9 foot ceilings, one secure underground parking stall, an extra visitor parking spot and a storage locker. This pet- and rental-friendly complex has an outdoor pool, hot tub, gym and social room in a quiet, beautifully landscaped location with hiking trails and bird watching in your backyard. An unbeatable location: minutes from 3 lakes, highly sought-after Davidson Elementary plus 3 more schools, Turtle Bay Marina, shopping, and the famous Rail Trail for biking. Spion Kop offers panoramic hiking trails. Nearby are wineries, cafes, orchards, and local farms. Bonus: UBCO, YLW, Predator Ridge Golf Course, and



Sparkling Hill Spa are just 15 minutes away.
(id:6289)

Built in 2007

Essential Information

Listing #	10354201
Price	\$495,000
Bedrooms	2
Bathrooms	2.00
Square Footage	983
Acres	1.00
Year Built	2007
Type	Single Family
Sub-Type	Strata
Style	Ranch

Community Information

Address	2551 Shoreline Drive Unit# 204
Subdivision	Sitara on the Pond
City	Lake Country
Province	British Columbia
Postal Code	V4P2P2

Amenities

Amenities	Airport, Park, Recreation, Shopping, Clubhouse, Recreation Centre, Storage - Locker
Features	One Balcony
Parking Spaces	1
Parking	Parkade, Underground
View	Mountain view, View of water, View (panoramic)
Is Waterfront	Yes
Waterfront	Waterfront on pond
Has Pool	Yes
Pool	Outdoor pool, Pool

Interior

Heating	Electric Forced air, Heat Pump
Cooling	Central air conditioning, Heat Pump

of Stories 1

Exterior

Exterior Stucco
Exterior Features Landscaped
Roof Asphalt shingle

Additional Information

Zoning Unknown

Listing Details

Listing Office Royal LePage Kelowna



The trademarks MLS®, Multiple Listing Service® and the associated logos are owned by The Canadian Real Estate Association (CREA) and identify the quality of services provided by real estate professionals who are members of CREA. REALTOR®. Member of CREA and more.

Listing information last updated on October 13th, 2025 at 1:46am MDT