

\$549,900 - 655 Academy Way Unit# 107, Kelowna

MLS® #10354835

\$549,900

3 Bedroom, 3.00 Bathroom, 939 sqft

Single Family on 1.00 Acres

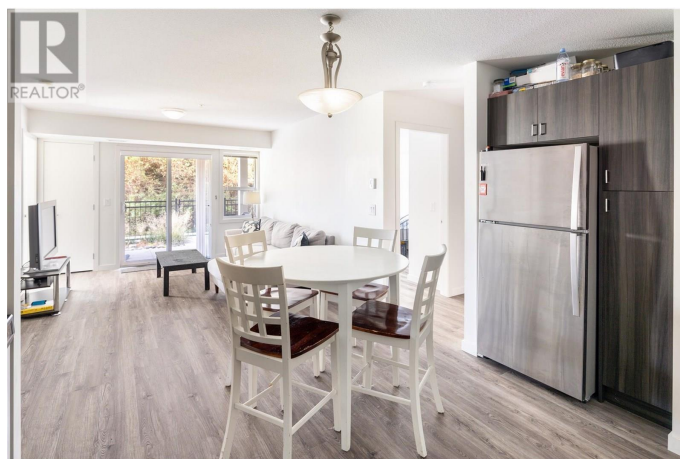
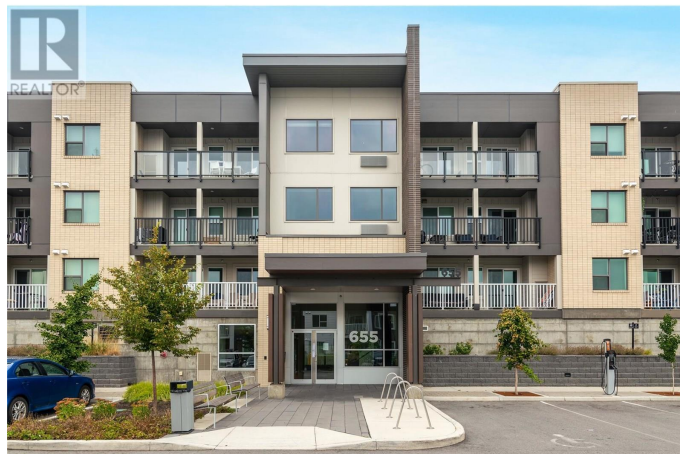
U-Seven, Kelowna, British Columbia

Bright, ground level fully furnished three bedroom three bathroom condo checks all the boxes. The layout is ideal for roommates with each bedroom having it's own dedicated bathroom and bright windows. Open concept living allows for easily shared space with a functional kitchen and tv space leading to a large ground level patio offering a secondary option for entrance and extended outdoor living. Uniquely positioned in the building this condo allows for no shared walls, extra windows and one of the largest patios available. A walking path off the patio leads quickly to street parking adding convenience for occupants or guests. One secure underground spot comes with the condo. Looking for a quick turn key investment? Look no further! (id:6289)

Built in 2019

Essential Information

Listing #	10354835
Price	\$549,900
Bedrooms	3
Bathrooms	3.00
Square Footage	939
Acres	1.00
Year Built	2019
Type	Single Family
Sub-Type	Strata



Style Other

Community Information

Address 655 Academy Way Unit# 107
Subdivision U-Seven
City Kelowna
Province British Columbia
Postal Code V1V0C8

Amenities

Amenities Golf Nearby, Public Transit, Airport, Park, Recreation, Schools, Shopping
Parking Spaces 1
Parking Underground
View Mountain view, Valley view

Interior

Heating Electric Forced air
Cooling Central air conditioning
of Stories 1

Exterior

Exterior Stone, Stucco, Other
Roof Asphalt shingle

Additional Information

Zoning Unknown

Listing Details

Listing Office RE/MAX Kelowna - Stone Sisters



The trademarks MLS®, Multiple Listing Service® and the associated logos are owned by The Canadian Real Estate Association (CREA) and identify the quality of services provided by real estate professionals who are members of CREA. REALTOR®. Member of CREA and more.

Listing information last updated on October 13th, 2025 at 10:31am MDT