

\$449,900 - 1155 Hugh Allan Drive Unit# 18, Kamloops

MLS® #10355549

\$449,900

3 Bedroom, 2.00 Bathroom, 1,603 sqft
Single Family on 1.00 Acres

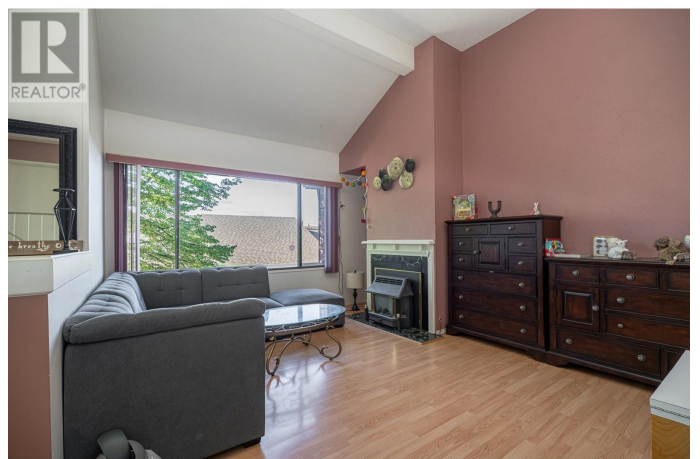
Glendevon Place, Kamloops, British Columbia

Located in the heart of Aberdeen, this delightful townhouse is conveniently near shopping centers, schools, and various amenities. It offers 3 BED and 2 BATH in a unique split-level layout. The lower level features a generous primary bedroom with an ensuite bathroom and a spacious laundry room with plenty of storage. The living room, with its HIGH vaulted ceilings and expansive windows, welcomes an abundance of natural light. On the upper level, you'll find the kitchen, dining area, two more bedrooms, and the main bathroom. The kitchen provides access to a covered back deck. Additional features include a single carport with some room for additional storage and an additional parking spot for your 2nd car. Pets are welcome with certain restrictions. You don't want to miss your chance to live in this amazing neighborhood, Book your appointment today! (id:6289)

Built in 1982

Essential Information

Listing #	10355549
Price	\$449,900
Bedrooms	3
Bathrooms	2.00
Square Footage	1,603
Acres	1.00
Year Built	1982
Type	Single Family



Sub-Type	Strata
Style	Split level entry

Community Information

Address	1155 Hugh Allan Drive Unit# 18
Subdivision	Glendevon Place
City	Kamloops
Province	British Columbia
Postal Code	V1S1B4

Amenities

Amenities	Park, Shopping
Parking	Additional Parking

Interior

Heating	Forced air, See remarks
Cooling	Central air conditioning
# of Stories	3

Exterior

Exterior	Wood siding
Roof	Asphalt shingle

Additional Information

Zoning	Unknown
--------	---------

Listing Details

Listing Office	Royal LePage Kamloops Realty (Seymour St)
----------------	---



The trademarks MLS®, Multiple Listing Service® and the associated logos are owned by The Canadian Real Estate Association (CREA) and identify the quality of services provided by real estate professionals who are members of CREA. REALTOR®. Member of CREA and more.

Listing information last updated on October 14th, 2025 at 1:01am MDT