

# \$730,000 - 2401 Parkview Drive, Kamloops

MLS® #10359197

**\$730,000**

4 Bedroom, 3.00 Bathroom, 2,581 sqft

Single Family on 0.17 Acres

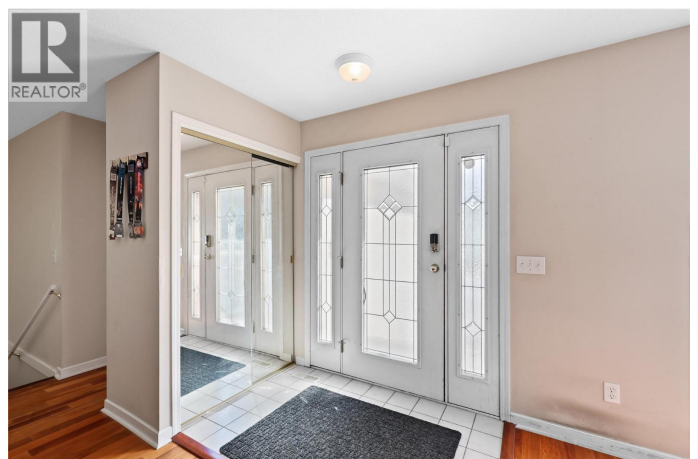
Westsyde, Kamloops, British Columbia

Enjoy the convenience of a great location paired with a home ready for your personal touch. This second-owner Westsyde level-entry rancher blends custom features with a thoughtful layout. The bright main floor showcases cherry hardwood, an open living/dining area, and a spacious kitchen with room for an island. Access your large patio out to a flat and enclosed yard that is ripe with opportunity for your ideas. Three bedrooms up include a primary suite with his-and-hers closets and a 3-piece ensuite, plus a 4-piece main bath. The basement offers a large, light-filled rec room, fourth bedroom, and laundry with built-ins. Potential to add a suite in the basement. Enjoy RV parking, a single-car garage, and plenty of extra parking spaces. Updates include roof (2010), hot water tank (2016), and furnace & A/C (2023). (id:6289)

Built in 1992

## Essential Information

Listing #	10359197
Price	\$730,000
Bedrooms	4
Bathrooms	3.00
Square Footage	2,581
Acres	0.17
Year Built	1992
Type	Single Family



Sub-Type	Freehold
Style	Other

### Community Information

Address	2401 Parkview Drive
Subdivision	Westsyde
City	Kamloops
Province	British Columbia
Postal Code	V2B7H9

### Amenities

Amenities	Shopping
Parking Spaces	1
Parking	Attached Garage
# of Garages	1

### Interior

Heating	Forced air, See remarks
Fireplace	Yes
# of Fireplaces	1
Fireplaces	Gas
# of Stories	1

### Exterior

Exterior	Stucco
Roof	Asphalt shingle

### Additional Information

Zoning	Unknown
--------	---------

### Listing Details

Listing Office	Royal LePage Westwin Realty
----------------	-----------------------------



The trademarks MLS®, Multiple Listing Service® and the associated logos are owned by The Canadian Real Estate Association (CREA) and identify the quality of services provided by real estate professionals who are members of CREA. REALTOR®. Member of CREA and more.

Listing information last updated on October 13th, 2025 at 6:01pm MDT