

# \$189,900 - 136 Rockcliffe Place, Tumbler Ridge

MLS® #10360031

**\$189,900**

3 Bedroom, 2.00 Bathroom, 1,520 sqft

Single Family on 0.13 Acres

Steeprock, Tumbler Ridge, British Columbia

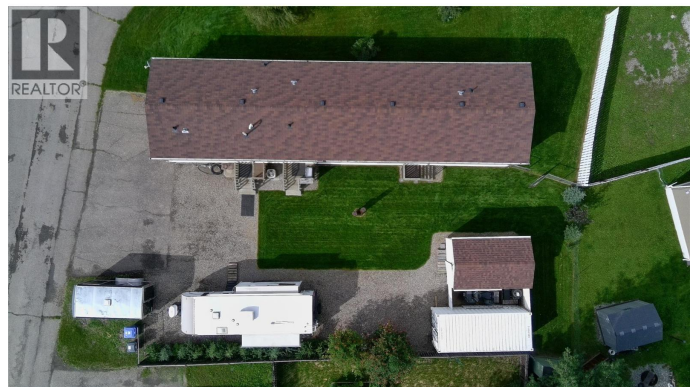
Situated on two spacious lots, this impressive property offers ample parking and exceptional living space both inside and out. The home features three generously sized bedrooms, including two with walk-in closets and one with a private ensuite, providing comfort and convenience for the whole family. Enjoy year-round comfort with air conditioning or turn on the gas fireplace, and soak in natural light through the bright, inviting windows throughout the home. Additional features include a water softener system, enhancing everyday living. This property combines functionality and comfort in a desirable layout—perfect for families or anyone looking for space and style. (id:6289)

Built in 2011

## Essential Information

Listing #	10360031
Price	\$189,900
Bedrooms	3
Bathrooms	2.00
Square Footage	1,520
Acres	0.13
Year Built	2011
Type	Single Family
Sub-Type	Strata

## Community Information



Address	136 Rockcliffe Place
Subdivision	Steeprock
City	Tumbler Ridge
Province	British Columbia
Postal Code	V0C2W0

### Amenities

Parking	Surfaced
---------	----------

### Interior

Heating	See remarks
Cooling	Central air conditioning
# of Stories	1

### Exterior

Roof	Asphalt shingle
------	-----------------

### Additional Information

Zoning	Unknown
--------	---------

### Listing Details

Listing Office	eXp Realty
----------------	------------



The trademarks MLS®, Multiple Listing Service® and the associated logos are owned by The Canadian Real Estate Association (CREA) and identify the quality of services provided by real estate professionals who are members of CREA. REALTOR®. Member of CREA and more.

Listing information last updated on October 15th, 2025 at 5:16am MDT