

\$419,000 - 2532 Shoreline Drive Unit# 301, Lake Country

MLS® #10360266

\$419,000

1 Bedroom, 1.00 Bathroom, 776 sqft

Single Family on 1.00 Acres

Winterra, Lake Country, British Columbia

Discover this bright, spacious, and thoughtfully updated 1-bedroom, 1-bathroom apartment on the third floor of the desirable Winterra at The Lakes community. With 776 sq ft of living space, large windows fill the home with natural light and offer serene views of the surrounding hillside. Apartment Features & Upgrades: â€¢

Brand-new updates throughout: carpet, kitchen sink, faucets, fridge, dishwasher, in-suite laundry set, and all light fixtures â€¢

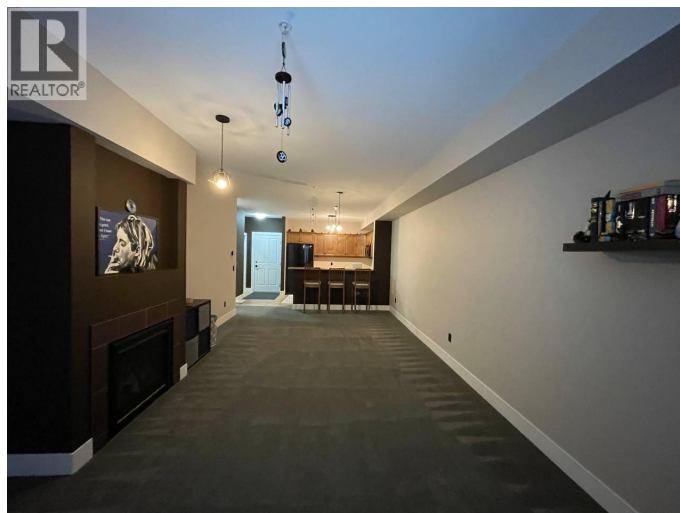
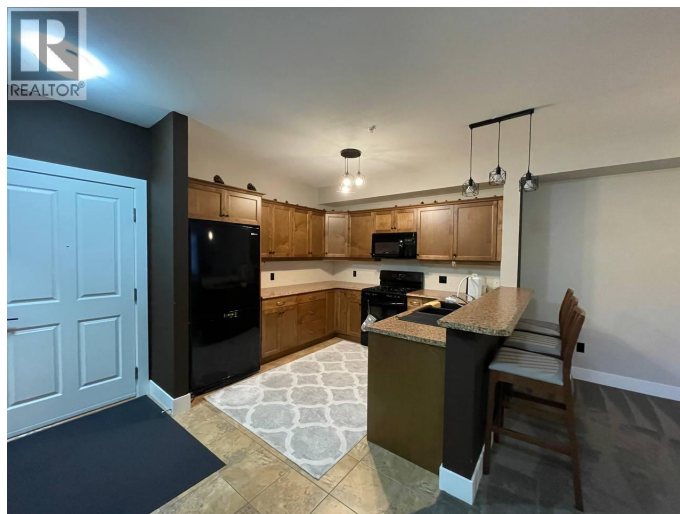
Freshly painted walls, including inside cabinets â€¢ All light switches, plugs, and door handles replaced â€¢ Bathroom upgraded with new drainage in the bathtub and new showerhead â€¢ Gas fireplace for cozy living â€¢ Gas stove, helping reduce electricity costs â€¢ Sold unfurnished, 3 bar stools included â€¢ Spacious layout with a modern, clean design perfect for comfortable living Lifestyle & Location: Wake up to fresh Okanagan air, surrounded by forest trails, rolling hills, and sparkling lakes. Enjoy hiking, biking, paddle boarding, or peaceful evenings on your balcony with scenic views. This home perfectly blends tranquil country living with modern city convenience. (id:6289)

Built in 2008

Essential Information

Listing # 10360266

Price \$419,000



Bedrooms	1
Bathrooms	1.00
Square Footage	776
Acres	1.00
Year Built	2008
Type	Single Family
Sub-Type	Strata
Style	Other

Community Information

Address	2532 Shoreline Drive Unit# 301
Subdivision	Winterra
City	Lake Country
Province	British Columbia
Postal Code	V4V2P2

Amenities

Amenities	Golf Nearby, Airport
Features	Level lot, One Balcony
Parking Spaces	1
Parking	Underground
View	Mountain view

Interior

Appliances	Refrigerator, Dishwasher, Dryer, Range - Gas, Microwave, Washer
Heating	Forced air, See remarks
Cooling	Central air conditioning
Fireplace	Yes
# of Fireplaces	1
Fireplaces	Gas
# of Stories	1

Exterior

Exterior	Stone, Other
Exterior Features	Landscaped, Level
Roof	Asphalt shingle

Additional Information

Zoning	Multi-Family
--------	--------------

Listing Details

Listing Office Team 3000 Realty Ltd



The trademarks MLS®, Multiple Listing Service® and the associated logos are owned by The Canadian Real Estate Association (CREA) and identify the quality of services provided by real estate professionals who are members of CREA. REALTOR®. Member of CREA and more.

Listing information last updated on October 13th, 2025 at 3:46am MDT