

# \$534,000 - 7306 Bertrand Road, Jaffray

MLS® #10360790

**\$534,000**

2 Bedroom, 2.00 Bathroom, 858 sqft

Single Family on 0.98 Acres

Jaffray and Vicinity, Jaffray, British Columbia

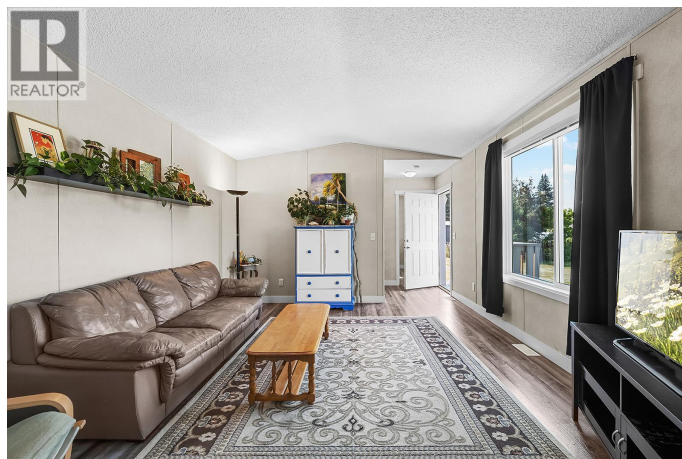
Welcome to your slice of South Country living in the heart of Jaffray. This charming 2019 two-bedroom, two-bath manufactured home sits on just under an acre offering the perfect balance of space and easy upkeep. Inside, the bright open-concept layout is enhanced by vaulted ceilings, giving a spacious and airy feel. The crisp white kitchen is both stylish and functional, with plenty of storage and natural light. Both bedrooms are generously sized, with the primary suite featuring a walk-in closet and full ensuite for comfort and privacy. A dedicated laundry area with backyard access adds everyday convenience. Step outside and embrace the mountain lifestyle. With plenty of room to garden, gather, or simply relax in the sunshine, this property also includes a greenhouse and two 20-ft insulated seacans—one equipped with power—for storage or hobbies. Surrounded by endless recreation opportunities, from fishing and hiking to skiing and lake days, this home makes the perfect base for enjoying everything the South Country has to offer. Contact your trusted real estate agent today to book a private tour of this Jaffray gem. (id:6289)

Built in 2018

## Essential Information

Listing # 10360790

Price \$534,000



Bedrooms	2
Bathrooms	2.00
Square Footage	858
Acres	0.98
Year Built	2018
Type	Single Family
Sub-Type	Freehold

### Community Information

Address	7306 Bertrand Road
Subdivision	Jaffray and Vicinity
City	Jaffray
Province	British Columbia
Postal Code	V0B1T0

### Amenities

Amenities	Golf Nearby, Park, Recreation, Schools, Shopping
Features	Cul-de-sac, Level lot, Private setting
Parking Spaces	7
Parking	Additional Parking, RV

### Interior

Appliances	Refrigerator, Dishwasher, Dryer, Range - Electric, Microwave, Washer
Heating	Forced air
# of Stories	1

### Exterior

Exterior	Vinyl siding
Exterior Features	Landscaped, Level
Roof	Asphalt shingle
Foundation	None

### Additional Information

Zoning	Unknown
--------	---------

### Listing Details

Listing Office	eXp Realty (Fernie)
----------------	---------------------



The trademarks MLS®, Multiple Listing Service® and the associated logos are owned by The Canadian Real Estate Association (CREA) and identify the quality of services provided by real estate professionals who are members of CREA. REALTOR®. Member of CREA and more.

Listing information last updated on October 13th, 2025 at 11:16pm MDT