

# \$794,000 - 975 Neptune Road, Kelowna

MLS® #10360844

## \$794,000

3 Bedroom, 3.00 Bathroom, 2,130 sqft

Single Family on 0.17 Acres

Rutland South, Kelowna, British Columbia

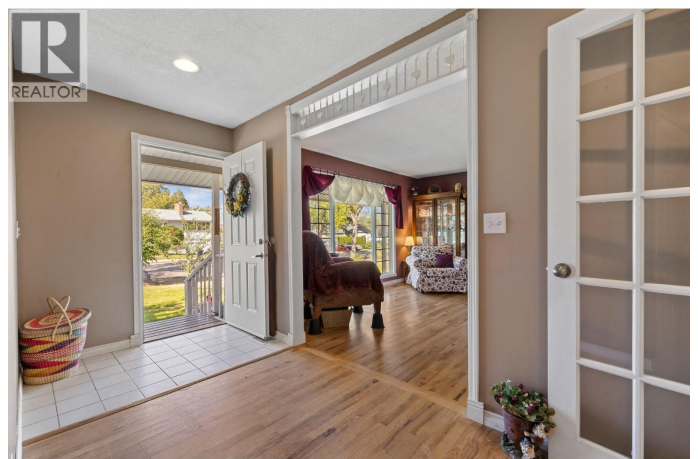
One of the nicest neighborhoods in Rutland South and sitting on the mission side of Springfield Road. Quiet no through street with beautiful trees, plenty of privacy and still close to shopping, transit and amenities. 3 Bedrooms, 3 Bathrooms, Hardwood & Laminate flooring, updated windows, plumbing and all mechanicals replaced in 2022. This home has everything you need including an ensuite, fully finished basement and a detached 16' x 20' powered workshop for the hobbyist. With over 2100sqft of family friendly living and a park like yard with no one out back looking in, this is a must see. (id:6289)

Built in 1973

## Essential Information

Listing #	10360844
Price	\$794,000
Bedrooms	3
Bathrooms	3.00
Half Baths	1
Square Footage	2,130
Acres	0.17
Year Built	1973
Type	Single Family
Sub-Type	Freehold
Style	Ranch

## Community Information



Address	975 Neptune Road
Subdivision	Rutland South
City	Kelowna
Province	British Columbia
Postal Code	V1X3E4

### Amenities

Parking Spaces	3
----------------	---

### Interior

Appliances	Refrigerator, Dishwasher, Dryer, Washer
Heating	Forced air
Cooling	Central air conditioning
# of Stories	2

### Exterior

Exterior	Stucco
Roof	Asphalt shingle

### Additional Information

Zoning	Unknown
--------	---------

### Listing Details

Listing Office	RE/MAX Kelowna
----------------	----------------



The trademarks MLS®, Multiple Listing Service® and the associated logos are owned by The Canadian Real Estate Association (CREA) and identify the quality of services provided by real estate professionals who are members of CREA. REALTOR®. Member of CREA and more.

Listing information last updated on October 12th, 2025 at 4:18pm MDT