

\$369,900 - 1435 Summit Drive Unit# 53, Kamloops

MLS® #10361075

\$369,900

2 Bedroom, 1.00 Bathroom, 1,184 sqft

Single Family on 1.00 Acres

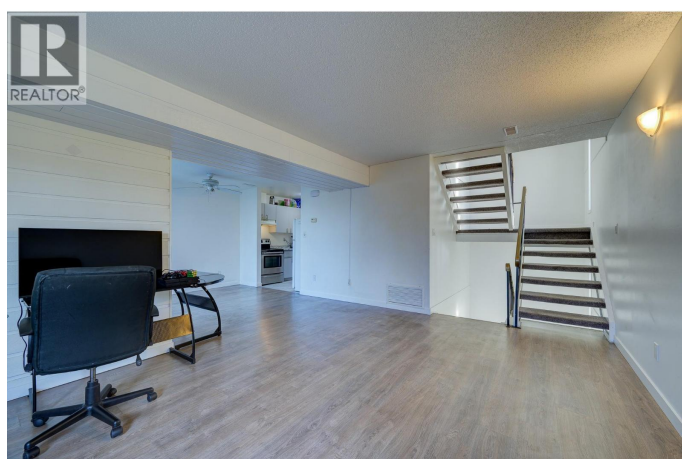
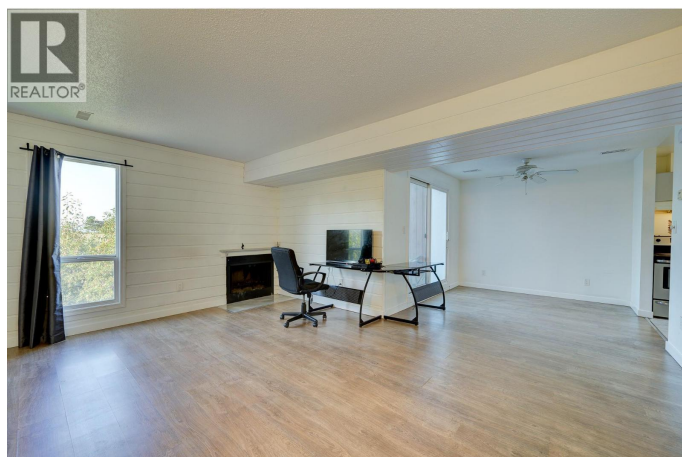
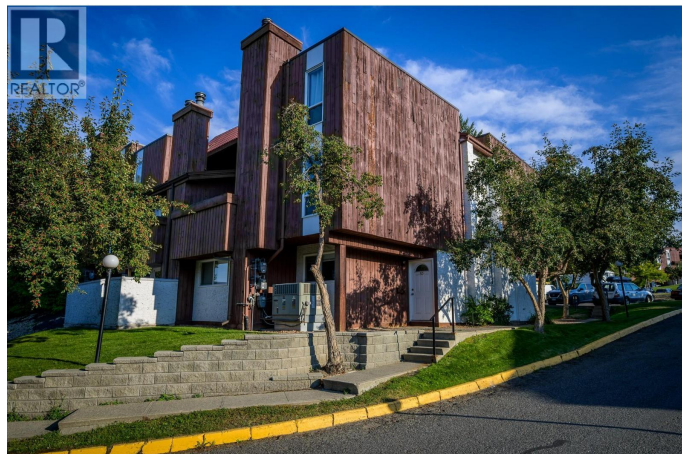
Sahali Mews, Kamloops, British Columbia

Welcome to this nicely maintained 2 bed, 1 bath, 1,184 sqft townhome spanning over 2 floors in a prime central location just minutes from the University. Ideal for students, first-time buyers, or investors, this home offers both comfort and unbeatable convenience. Enjoy a spacious floor plan, a bright living area, and the peace of having your own designated parking spot. With the University, shopping, dining, transit, and parks all close by, this property provides excellent rental potential and everyday convenience. Whether you're looking to build equity, downsize, or add to your investment portfolio, this home checks all the boxes. Don't miss out on this opportunity to own in one of the most sought-after central locations! Call me today to book your private showing. All Measurements are approximate. Please verify if important. (id:6289)

Built in 1976

Essential Information

Listing #	10361075
Price	\$369,900
Bedrooms	2
Bathrooms	1.00
Square Footage	1,184
Acres	1.00
Year Built	1976
Type	Single Family



Sub-Type	Strata
Style	Other

Community Information

Address	1435 Summit Drive Unit# 53
Subdivision	Sahali Mews
City	Kamloops
Province	British Columbia
Postal Code	V2E1S4

Interior

Heating	Baseboard heaters
Cooling	Central air conditioning
# of Stories	2

Additional Information

Zoning	Unknown
--------	---------

Listing Details

Listing Office	Stonehaus Realty Corp
----------------	-----------------------



The trademarks MLS®, Multiple Listing Service® and the associated logos are owned by The Canadian Real Estate Association (CREA) and identify the quality of services provided by real estate professionals who are members of CREA. REALTOR®. Member of CREA and more.

Listing information last updated on October 13th, 2025 at 6:01pm MDT