

# \$799,900 - 630 Boynton Place Unit# 213, Kelowna

MLS® #10361264

**\$799,900**

2 Bedroom, 2.00 Bathroom, 987 sqft

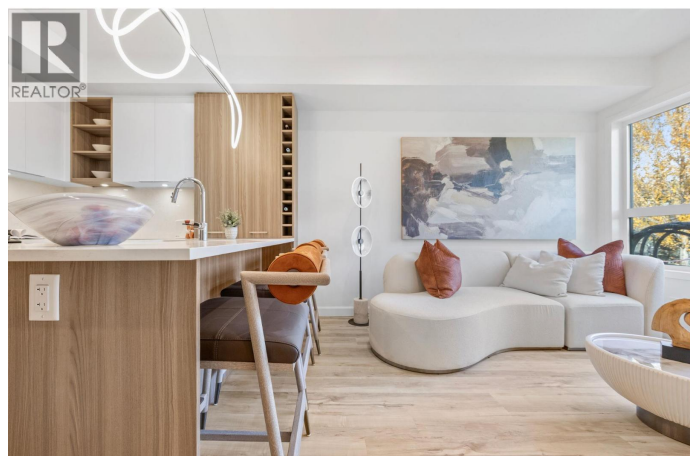
Single Family on 1.00 Acres

Eminence, Kelowna, British Columbia

Welcome to the Summit at Eminence at Knox Mountain! The striking natural backdrop of Knox Mountain is the inspiration for Eminence's™ upscale, modern mountain architecture and prominent streetscape, working in harmony with the prestigious, well-established neighbouring communities, Highpointe and Magic Estates. This charming well appointed two bedroom, two bathroom and den, offers 987 square feet of modern living space. This beautifully designed home features high-end finishes, including sleek stainless steel appliances and a stunning quartz backsplash that adds both style and durability to the kitchen. The elegant two-toned soft-close cabinets provide ample storage while maintaining a sophisticated, contemporary aesthetic. Eminence is rich in resort inspired amenities which include The Lodge an exclusive owners lounge, outdoor pool and hot tub, fitness centre, off leash dog park and direct access to Knox Mountain's hiking trail system. Whether you're cooking, relaxing, or entertaining, this home offers the perfect balance of comfort and functionality. Don't miss out on this ideal blend of luxury and practicality in a perfect location! Estimated completion September 2025. (id:6289)

Built in 2025

## Essential Information



|                |               |
|----------------|---------------|
| Listing #      | 10361264      |
| Price          | \$799,900     |
| Bedrooms       | 2             |
| Bathrooms      | 2.00          |
| Square Footage | 987           |
| Acres          | 1.00          |
| Year Built     | 2025          |
| Type           | Single Family |
| Sub-Type       | Strata        |
| Style          | Contemporary  |

### Community Information

|             |                             |
|-------------|-----------------------------|
| Address     | 630 Boynton Place Unit# 213 |
| Subdivision | Eminence                    |
| City        | Kelowna                     |
| Province    | British Columbia            |
| Postal Code | V1W3S9                      |

### Amenities

|                |                             |
|----------------|-----------------------------|
| Features       | Balcony                     |
| Parking Spaces | 1                           |
| Parking        | Parkade, Underground        |
| View           | Mountain view               |
| Has Pool       | Yes                         |
| Pool           | Inground pool, Outdoor pool |

### Interior

|              |   |
|--------------|---|
| Appliances   | Refrigerator, Dishwasher, Dryer, Range - Gas, Microwave, Washer |
| Heating      | Forced air, Heat Pump   |
| Cooling      | Heat Pump   |
| # of Stories | 1   |

### Exterior

|          |              |
|----------|--------------|
| Exterior | Stone, Other |
| Roof     | Other        |

### Additional Information

|        |         |
|--------|---------|
| Zoning | Unknown |
|--------|---------|

### Listing Details

Listing Office

Sotheby's International Realty Canada



The trademarks MLS®, Multiple Listing Service® and the associated logos are owned by The Canadian Real Estate Association (CREA) and identify the quality of services provided by real estate professionals who are members of CREA. REALTOR®. Member of CREA and more.

Listing information last updated on October 13th, 2025 at 4:01am MDT