

\$2,247,696 - 826 Glenmore Drive, Kelowna

MLS® #10363215

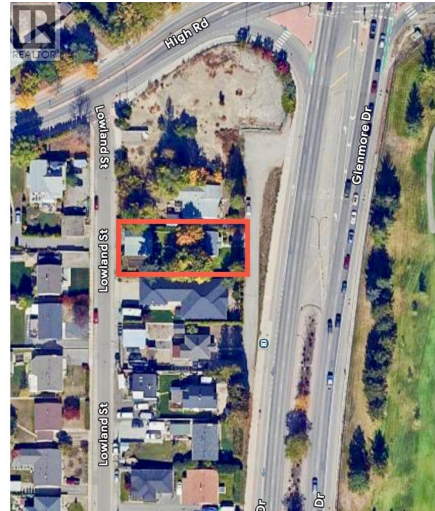
\$2,247,696

1 Bedroom, 1.00 Bathroom, 824 sqft

Single Family on 0.20 Acres

Glenmore, Kelowna, British Columbia

Land Assembly with 834 Glenmore.
(10363222) Prime development opportunity on a Transit Supportive Corridor (TSC), this property offers exceptional potential for low rise apartment development under the TSC guidelines. Just minutes from the highly anticipated new Parkinson Recreation Centre and minutes to downtown, this site is ideally located in a rapidly evolving, transit-oriented area within the Glenmore neighbourhood.
(id:6289)



Built in 1956

Essential Information

Listing #	10363215
Price	\$2,247,696
Bedrooms	1
Bathrooms	1.00
Square Footage	824
Acres	0.20
Year Built	1956
Type	Single Family
Sub-Type	Freehold
Style	Bungalow

Community Information

Address	826 Glenmore Drive
Subdivision	Glenmore
City	Kelowna
Province	British Columbia

Postal Code V1Y4N9

Amenities

Utilities Cable, Electricity, Natural Gas, Sewer, Water

Parking Spaces 1

Parking Surfaced

Interior

Heating No heat

of Stories 1

Additional Information

Zoning Residential

Listing Details

Listing Office eXp Realty of Canada, Inc.



The trademarks MLS®, Multiple Listing Service® and the associated logos are owned by The Canadian Real Estate Association (CREA) and identify the quality of services provided by real estate professionals who are members of CREA. REALTOR®. Member of CREA and more.

Listing information last updated on October 12th, 2025 at 10:01pm MDT