

# **\$769,000 - 2050 Grasslands Boulevard Unit# 148, Kamloops**

---

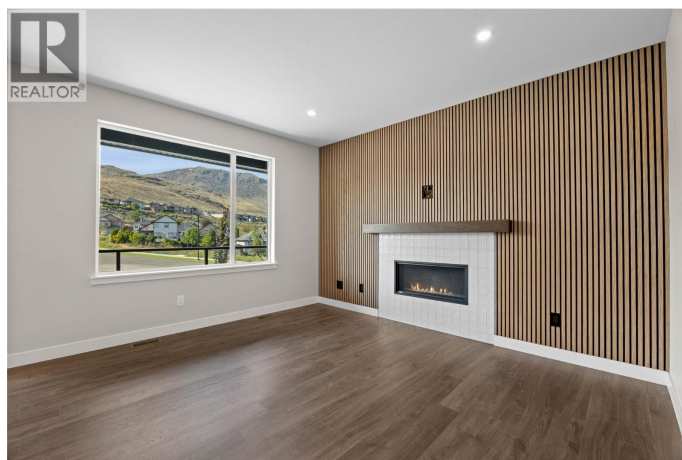
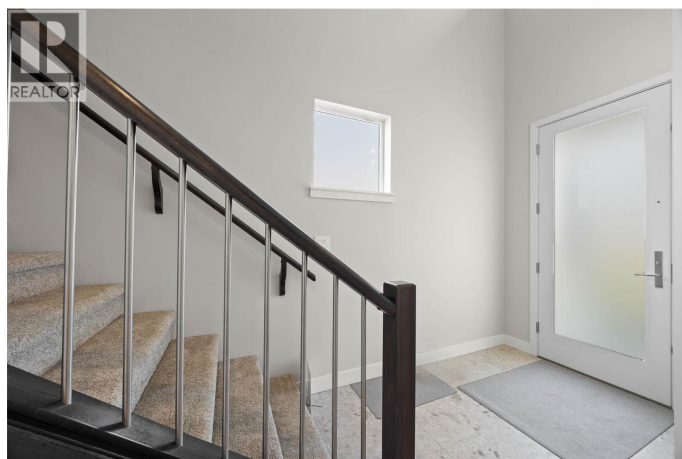
MLS® #10363401

**\$769,000**

4 Bedroom, 4.00 Bathroom, 2,176 sqft  
Single Family on 1.00 Acres

MESA RIDGE, Kamloops, British Columbia

Mesa Ridge is an exclusive community of 56 thoughtfully designed duplex-style homes nestled in the scenic hills of Batchelor Heights. This brand-new 2-storey half duplex features a bright, open-concept main floor with expansive windows and included blinds, allowing natural light to fill the space while offering privacy and comfort. The kitchen, dining, and living areas flow seamlessly, creating an inviting space perfect for both everyday living and entertaining. With 4 bedrooms and 4 bathrooms, including a spacious primary suite with a private ensuite, this home is designed for both functionality and ease of living. Interior finishes showcase timeless craftsmanship, featuring a walnut slat accent wall, quartz countertops, and quality cabinetry by Excel Industries. Laminate flooring adds a modern touch to the main living areas, plush carpeting provides warmth in the bedrooms, and tile ensures durability in the bathrooms. The fully finished basement expands the living space with a cozy family room, an additional bedroom and full bathroom, offering flexibility for a guest suite, home office, or extra space for growing families. Additional features include a double-car garage, low-maintenance yard, and full window coverings throughout. Located just minutes from schools, parks, hiking trails, and all the amenities Kamloops has to offer, Mesa Ridge combines modern design, hillside tranquility, and a welcoming



sense of community. (id:6289)

Built in 2025

**Essential Information**

Listing #	10363401
Price	\$769,000
Bedrooms	4
Bathrooms	4.00
Half Baths	1
Square Footage	2,176
Acres	1.00
Year Built	2025
Type	Single Family
Sub-Type	Strata

**Community Information**

Address	2050 Grasslands Boulevard Unit# 148
Subdivision	MESA RIDGE
City	Kamloops
Province	British Columbia
Postal Code	V2B0K7

**Amenities**

Parking Spaces	2
Parking	Attached Garage
# of Garages	2

**Interior**

Heating	Forced air
Cooling	Central air conditioning
# of Stories	3

**Exterior**

Exterior	Stone
Roof	Asphalt shingle

**Additional Information**

Zoning	Unknown
--------	---------

## Listing Details

Listing Office      Royal LePage Westwin Realty



The trademarks MLS®, Multiple Listing Service® and the associated logos are owned by The Canadian Real Estate Association (CREA) and identify the quality of services provided by real estate professionals who are members of CREA. REALTOR®. Member of CREA and more.

Listing information last updated on October 13th, 2025 at 3:31pm MDT