

\$1,149,900 - 3650 Princeton Kamloops Highway, Kamloops

MLS® #10363725

\$1,149,900

5 Bedroom, 4.00 Bathroom, 3,036 sqft
Single Family on 27.40 Acres

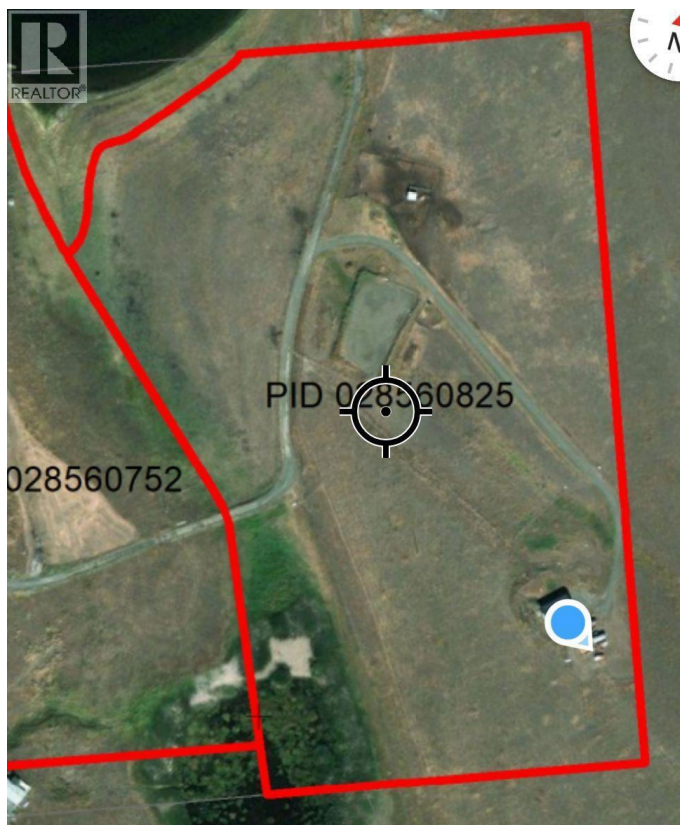
Knutsford-Lac Le Jeune, Kamloops, British Columbia

The home itself is a great functional layout for a family or those desiring space. The main living space is an open great room style with views from all the windows & includes 3 bedrooms & 2 full bathrooms. Walk off the kitchen to the wrap around deck with yard/shop access. The basement level is a daylight walk-out with 2 additional bedrooms, a large family room, storage, mud/laundry room & 2 bathrooms. WETT certified wood stove & hot tub off the side of the home to keep you warm! The property itself has so many great features: fenced & cross fenced, perfect horse set up: 8 paddocks with 10x20 shelters, frost free waterers with their own 20 amp service, 200 foot outdoor riding arena with tack shed, 60 foot round pen, 200 amp service to the home & 100 amp separate service to the horse area, a detached 15x30 shop & a 65x30 foot coverall shelter, hay barn & large fenced garden(approx. 50x80). Tons of parking. No GST. Notice required for showings (id:6289)

Built in 2007

Essential Information

Listing #	10363725
Price	\$1,149,900
Bedrooms	5
Bathrooms	4.00



Half Baths	1
Square Footage	3,036
Acres	27.40
Year Built	2007
Type	Single Family
Sub-Type	Freehold
Style	Ranch

Community Information

Address	3650 Princeton Kamloops Highway
Subdivision	Knutsford-Lac Le Jeune
City	Kamloops
Province	British Columbia
Postal Code	V0E2A0

Amenities

Amenities	Recreation, Shopping
Utilities	Cable, Electricity, Natural Gas, Telephone
Features	Sloping, See remarks, Central island, Balcony
Parking Spaces	20
Parking	Additional Parking, Detached Garage, RV, See Remarks
# of Garages	4
View	Lake view, Mountain view, Valley view, View of water, View (panoramic)

Interior

Appliances	Range, Refrigerator, Dishwasher, Microwave, Washer & Dryer
Heating	Wood Forced air, Heat Pump, Stove, See remarks
Cooling	Central air conditioning, Heat Pump
Fireplace	Yes
# of Fireplaces	1
Fireplaces	Wood
# of Stories	2

Exterior

Exterior	Other
Exterior Features	Rolling, Sloping
Roof	Metal

Additional Information

Zoning Unknown

Listing Details

Listing Office Century 21 Assurance Realty L



The trademarks MLS®, Multiple Listing Service® and the associated logos are owned by The Canadian Real Estate Association (CREA) and identify the quality of services provided by real estate professionals who are members of CREA. REALTOR®. Member of CREA and more.

Listing information last updated on October 13th, 2025 at 3:16pm MDT