

# \$389,900 - 1605 Summit Drive Unit# 75, Kamloops

MLS® #10363902

**\$389,900**

2 Bedroom, 2.00 Bathroom, 1,296 sqft

Single Family on 0.02 Acres

RIVERVIEW VILLAGE, Kamloops, British Columbia

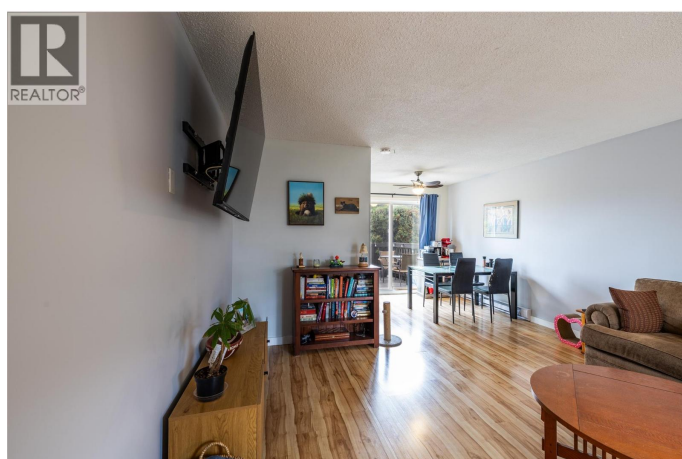
Bright & Spacious Home – Ideal for First-Time Buyers or Investors! This charming unit features 2 bedrooms and 2 bathrooms, including a brand-new rec room and additional bathroom with laundry on the lower level. Enjoy a private backyard, perfect for relaxing or entertaining, complete with a sundeck for soaking up the sun. Inside, you'll find updated laminate flooring and modern windows that flood the space with natural light. A welcoming and versatile layout makes this home a fantastic opportunity for both personal living and investment. All measurements are approximate. Please call today for more information or to view. (id:6289)

Built in 1975

## Essential Information

Listing #	10363902
Price	\$389,900
Bedrooms	2
Bathrooms	2.00
Square Footage	1,296
Acres	0.02
Year Built	1975
Type	Single Family
Sub-Type	Strata
Style	Split level entry

## Community Information



Address	1605 Summit Drive Unit# 75
Subdivision	RIVERVIEW VILLAGE
City	Kamloops
Province	British Columbia
Postal Code	V2E2A5

### **Amenities**

Amenities	Recreation, Shopping
Utilities	Electricity
Parking Spaces	1

### **Interior**

Appliances	Range, Refrigerator, Washer & Dryer
Heating	Electric Baseboard heaters
# of Stories	3

### **Exterior**

Exterior	Other
Roof	Asphalt shingle

### **Additional Information**

Zoning	Unknown
--------	---------

### **Listing Details**

Listing Office	Royal LePage Westwin Realty
----------------	-----------------------------



The trademarks MLS®, Multiple Listing Service® and the associated logos are owned by The Canadian Real Estate Association (CREA) and identify the quality of services provided by real estate professionals who are members of CREA. REALTOR®. Member of CREA and more.

Listing information last updated on October 13th, 2025 at 3:16pm MDT