

\$567,900 - 366 Waddington Drive, Kamloops

MLS® #10364111

\$567,900

3 Bedroom, 2.00 Bathroom, 1,710 sqft
Single Family on 0.09 Acres

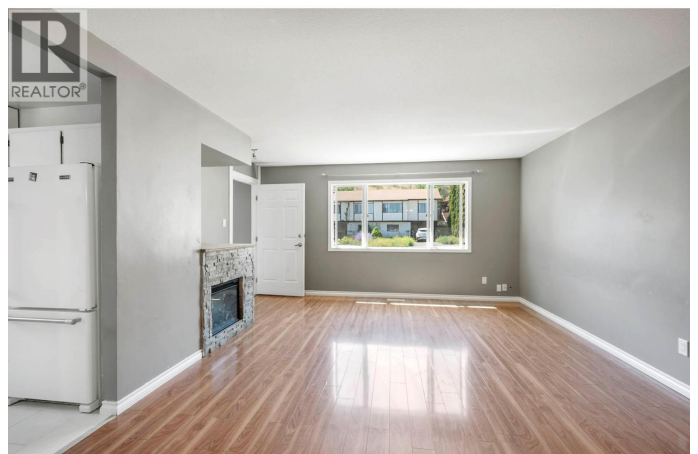
Sahali, Kamloops, British Columbia

Welcome to 366 Waddington Drive! This half duplex checks all the boxes—unobstructed city views, a highly sought-after Sahali location, a mortgage helper, and direct access to Gordon horn Park right next door. Perfect for first-time buyers looking to step into the market with added rental income from the in-law suite (currently generating \$1,565/month) or for investors seeking a strong cash-flow property (with market rent potential up to \$3,800/month). The home has been well maintained and thoughtfully updated with major upgrades already taken care of: brand-new hot water tank (2025), updated electrical panel (2025), furnace (2014), roof (2013), and vinyl windows (2013). Inside, you'll find newer appliances—stove (2022), fridge (2019), washer/dryer (2015), and dishwasher (2011)—along with stylish laminate flooring and modern finishes throughout. The flexible layout allows you to keep 2 bedrooms + a den for the main level while offering a 1-bedroom suite for tenants, or adapt the space to suit your needs. Located on a bus route and just minutes from TRU, schools, shopping, restaurants, and amenities, this property combines convenience, rental potential, and long-term value. (id:6289)

Built in 1975

Essential Information

Listing # 10364111



Price	\$567,900
Bedrooms	3
Bathrooms	2.00
Square Footage	1,710
Acres	0.09
Year Built	1975
Type	Single Family
Sub-Type	Freehold
Style	Bungalow

Community Information

Address	366 Waddington Drive
Subdivision	Sahali
City	Kamloops
Province	British Columbia
Postal Code	V2E1M5

Amenities

Parking Spaces	3
----------------	---

Interior

Heating	Forced air
# of Stories	1

Additional Information

Zoning	Unknown
--------	---------

Listing Details

Listing Office	Century 21 Assurance Realty Ltd.
----------------	----------------------------------



The trademarks MLS®, Multiple Listing Service® and the associated logos are owned by The Canadian Real Estate Association (CREA) and identify the quality of services provided by real estate professionals who are members of CREA. REALTOR®. Member of CREA and more.

Listing information last updated on October 13th, 2025 at 3:31pm MDT