

# \$2,247,696 - 818 Glenmore Drive, Kelowna

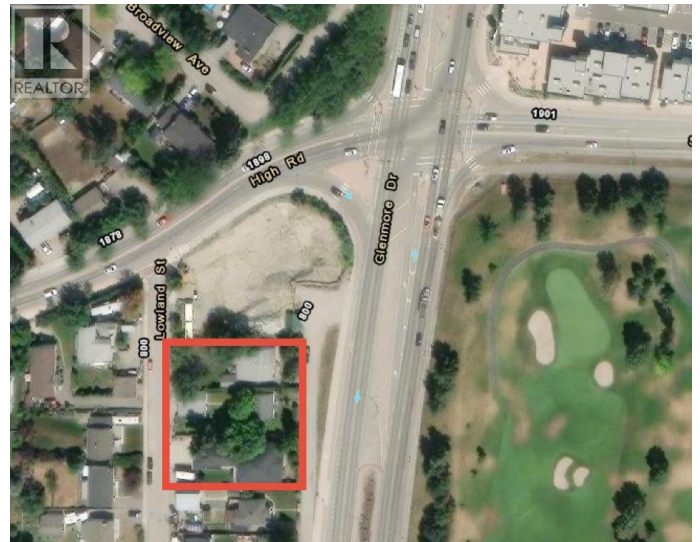
MLS® #10364147

**\$2,247,696**

1 Bedroom, 1.00 Bathroom, 2,220 sqft  
Single Family on 0.20 Acres

Glenmore, Kelowna, British Columbia

Land Assembly opportunity to be sold in conjunction with 826 & 834 Glenmore Dr. (10363222/ 10363215) Prime development opportunity on a Transit Supportive Corridor (TSC), this property offers exceptional potential for low rise apartment development under the TSC guidelines. Just minutes from the highly anticipated new Parkinson Recreation Centre and minutes to downtown, this site is ideally located in a rapidly evolving, transit-oriented area within the Glenmore neighbourhood. (id:6289)



Built in 1959

## Essential Information

Listing #	10364147
Price	\$2,247,696
Bedrooms	1
Bathrooms	1.00
Square Footage	2,220
Acres	0.20
Year Built	1959
Type	Single Family
Sub-Type	Freehold
Style	Ranch

## Community Information

Address	818 Glenmore Drive
Subdivision	Glenmore
City	Kelowna

Province                      British Columbia  
Postal Code                V1Y4N9

### **Amenities**

Parking                      Surfaced

### **Interior**

Heating                      No heat

# of Stories                1

### **Additional Information**

Zoning                      Unknown

### **Listing Details**

Listing Office              eXp Realty of Canada, Inc.



The trademarks MLS®, Multiple Listing Service® and the associated logos are owned by The Canadian Real Estate Association (CREA) and identify the quality of services provided by real estate professionals who are members of CREA. REALTOR®. Member of CREA and more.

Listing information last updated on October 12th, 2025 at 10:16pm MDT