

\$450,000 - Lot 2 New Cambria Drive, Welshtown

MLS® #202505145

\$450,000

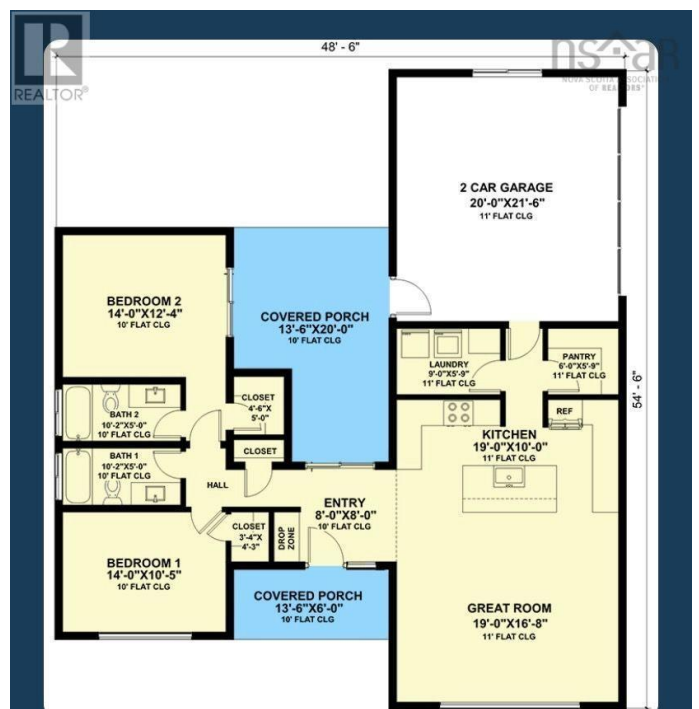
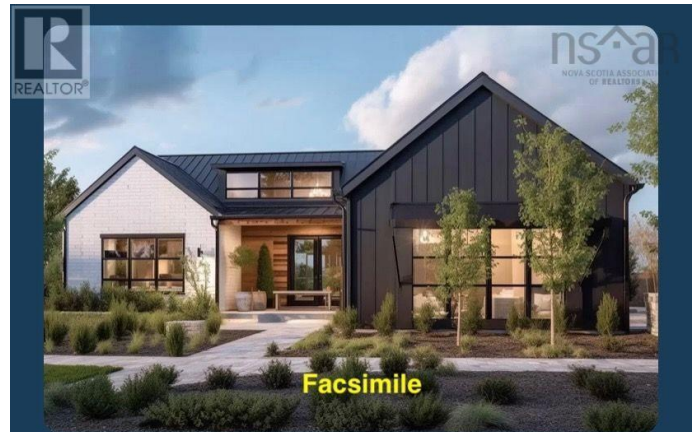
2 Bedroom, 2.00 Bathroom, 1,346 sqft

Single Family on 1.00 Acres

Welshtown, Welshtown, Nova Scotia

Incredible opportunity to own a 2-bedroom new construction home, situated on a 1-acre lot. With an open concept kitchen, dining, and living area, this home will provide the perfect space for entertaining family and friends. Large, bright windows will allow natural light to fill the space, creating an open and airy feel that you'll love. With its prime location just a short walk from Welshtown Lake and the family-friendly Welkum Park, you'll enjoy endless opportunities for outdoor fun and relaxation. Cambria Estates is known for quality homes that offer the best of both worlds - modern convenience and natural beauty. Don't miss your chance to own this luxurious new build in a quiet neighborhood surrounded by nature. (id:6289)

Built in 2025



Essential Information

Listing #	202505145
Price	\$450,000
Bedrooms	2
Bathrooms	2.00
Square Footage	1,346
Acres	1.00
Year Built	2025
Type	Single Family
Sub-Type	Freehold

Community Information

Address	Lot 2 New Cambria Drive
Subdivision	Welshtown
City	Welshtown
Province	Nova Scotia
Postal Code	B0T1W0

Amenities

Amenities	Park, Playground, Place of Worship
Parking	Attached Garage, Garage, Gravel
# of Garages	2

Interior

# of Stories	1
--------------	---

Exterior

Exterior	Vinyl
Foundation	Concrete Slab

Listing Details

Listing Office	Royal LePage Atlantic (Mahone Bay)
----------------	------------------------------------



The trademarks MLS®, Multiple Listing Service® and the associated logos are owned by The Canadian Real Estate Association (CREA) and identify the quality of services provided by real estate professionals who are members of CREA. REALTOR®. Member of CREA and more.

Listing information last updated on October 13th, 2025 at 4:17pm MDT