

\$1,199,900 - 390 Gleneagles Drive, Hammonds Plains

MLS® #202507774

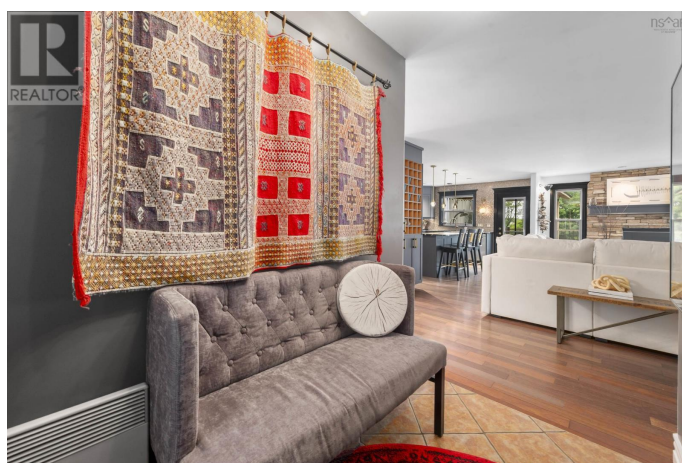
\$1,199,900

5 Bedroom, 3.00 Bathroom, 3,426 sqft

Single Family on 2.50 Acres

Hammonds Plains, Hammonds Plains, Nova Scotia

Waterfront Property! Welcome to 390 Gleneagles Drive, a breathtaking 5 bedroom, 3 bathroom executive estate where luxury meets nature. Nestled on 2.5 private acres with 195 feet of river frontage leading to McCabe Lake, this exceptional property offers high-end living in a serene, private oasis, just 30 minutes from Halifax. Step inside to experience elegant craftsmanship at every turn. The open-concept main level features rich hardwood floors and expansive windows that flood the space with natural light. The gourmet kitchen is a chefs dream, with custom cabinetry, a walk-in pantry, sleek leathered granite countertops, and a grand island perfect for entertaining. The spacious living room is anchored by a cozy wood-burning fireplace. A formal dining area sets the stage for elegant gatherings, while the den, easily convertible into a bedroom, adds flexibility. The primary suite is a true retreat, offering a spa-inspired ensuite, walk-in closet, and tranquil views of the lush surroundings. A well-appointed bedroom, a full bath, a laundry room, and a walk-out 500 sq ft deck with covered outdoor living space, complete this level. The lower level is designed for comfort and entertainment, featuring 2 additional bedrooms, a den that can convert, family room with a cozy pellet burning stove, a full bath, and plenty of storage space. Unique features include a private gym and a custom wine-tasting room. Outside your private retreat awaits; a



waterview cabana overlooking a lavender field, a scenic wooded path leading directly to the river to enjoy swimming, kayaking, trout and bass fishing right in your backyard. The multiple outdoor living spaces invite you to embrace four-season indoor-outdoor living with river views. New energy efficient heat pumps on both levels (installed in 2025.) This estate strikes the perfect balance of seclusion and convenience, with community-focused amenities top-rated schools,golf course, parks, and downtown Halifax just minutes away.
(id:6289)

Built in 2005

Essential Information

Listing #	202507774
Price	\$1,199,900
Bedrooms	5
Bathrooms	3.00
Square Footage	3,426
Acres	2.50
Year Built	2005
Type	Single Family
Sub-Type	Freehold
Style	2 Level

Community Information

Address	390 Gleneagles Drive
Subdivision	Hammonds Plains
City	Hammonds Plains
Province	Nova Scotia
Postal Code	B4B1V8

Amenities

Amenities	Golf Course, Park, Playground, Public Transit, Shopping, Place of Worship
Features	Treed, Sloping, Gazebo
Parking	Attached Garage, Garage, Gravel, Parking Space(s)

# of Garages	2
Is Waterfront	Yes
Waterfront	Waterfront on river

Interior

Appliances	Cooktop - Electric, Oven, Dishwasher, Dryer, Washer, Microwave, Refrigerator, Wine Fridge, Water softener, Central Vacuum - Roughed In
Cooling	Heat Pump
# of Stories	1

Exterior

Exterior	Vinyl
Exterior Features	Landscaped
Foundation	Poured Concrete

Listing Details

Listing Office	RE/MAX Nova (Halifax)
----------------	-----------------------



The trademarks MLS®, Multiple Listing Service® and the associated logos are owned by The Canadian Real Estate Association (CREA) and identify the quality of services provided by real estate professionals who are members of CREA. REALTOR®. Member of CREA and more.

Listing information last updated on October 14th, 2025 at 6:16am MDT