

\$724,900 - 4 Charles Meade Drive, Williamswood

MLS® #202513775

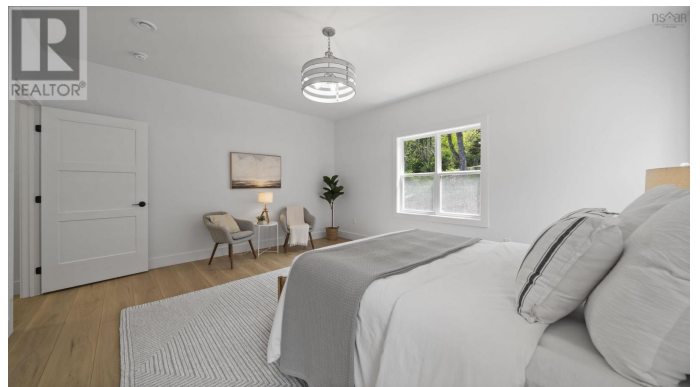
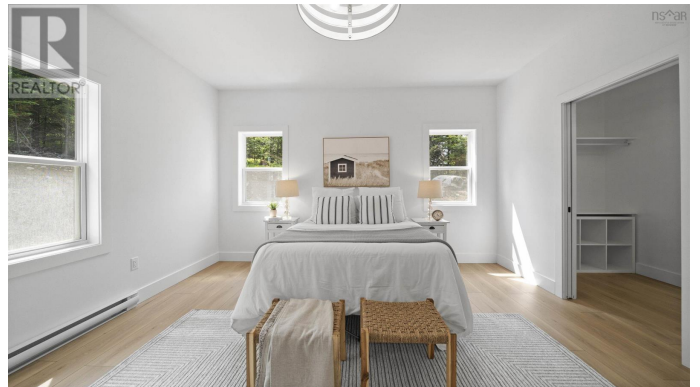
\$724,900

3 Bedroom, 2.00 Bathroom, 1,850 sqft

Single Family on 0.86 Acres

Williamswood, Williamswood, Nova Scotia

Welcome to your dream home- a meticulously crafted new construction bungalow nestled on a serene and private street. This beautifully designed residence combines modern comfort with timeless charm, offering an exceptional living space. From the moment you arrive, you'll notice the attention to detail from the inviting curb appeal to the seamless layout that flows effortlessly from room to room. Every inch of this home has been thoughtfully planned to maximize space, functionality, and natural light. Step inside to discover a bright, open-concept floor plan featuring high ceilings, premium finishes, and designer touches throughout. The heart of the home is the gourmet kitchen, complete with quartz countertops, custom cabinetry, and top-of-the-line appliances perfect for entertaining or everyday living. The primary suite is a true retreat, boasting a spacious layout, spa-inspired ensuite, and generous walk-in closet. Additional bedrooms offer flexibility for guests, a home office, or a growing family. Enjoy the tranquility of your private outdoor space ideal for morning coffee, evening gatherings, or simply unwinding at the end of the day. With its low-maintenance landscaping and quiet surroundings, this home offers both luxury and ease. Located just minutes from local amenities yet tucked away from the hustle and bustle, this is more than a home it's a lifestyle. (id:6289)



Essential Information

Listing #	202513775
Price	\$724,900
Bedrooms	3
Bathrooms	2.00
Square Footage	1,850
Acres	0.86
Type	Single Family
Sub-Type	Freehold

Community Information

Address	4 Charles Meade Drive
Subdivision	Williamswood
City	Williamswood
Province	Nova Scotia
Postal Code	B3V1B7

Amenities

Amenities	Park, Playground, Beach
Features	Wheelchair access, Level
Parking	Attached Garage, Garage, Gravel
# of Garages	2

Interior

Appliances	Range - Electric, Dishwasher, Dryer - Electric, Washer, Refrigerator, Water softener
Cooling	Heat Pump
# of Stories	1

Exterior

Exterior	Stone, Vinyl
Exterior Features	Partially landscaped
Foundation	Poured Concrete, Concrete Slab

Listing Details

Listing Office	Sutton Group Professional Realty
----------------	----------------------------------



The trademarks MLS®, Multiple Listing Service® and the associated logos are owned by The Canadian Real Estate Association (CREA) and identify the quality of services provided by real estate professionals who are members of CREA. REALTOR®. Member of CREA and more.

Listing information last updated on October 12th, 2025 at 11:46pm MDT