

\$225,000 - 279 King Edward Street, Glace Bay

MLS® #202521683

\$225,000

4 Bedroom, 2.00 Bathroom, 1,464 sqft

Single Family on 0.21 Acres

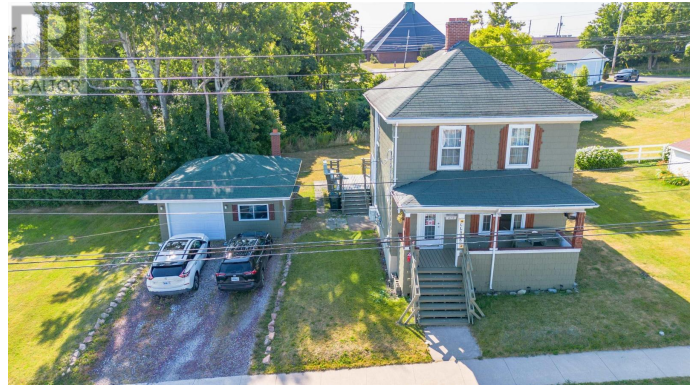
Glace Bay, Glace Bay, Nova Scotia

Welcome to 279 King Edward Street. This classic Glace Bay home boasts 4 bedrooms and 2 full baths, perfect for a family. Outside you have a large yard perfect for kids to play and a detached garage to keep your car out of the weather or use it as a workshop. Inside, you will find an eat-in Kitchen with ceramic floors, shaker style wooden cabinets and all of the charm. The first of two full bathrooms is off of the kitchen and adds to the convenience of this home. The living and dining rooms are open concept and boast gorgeous hardwood floors and large windows to let the natural light shine in. Upstairs are all 4 of the bedrooms and the second full bathroom. This home is ready for a new family to love it as much as its current one did. Reach out to your real estate gent for a private viewing today. (id:6289)

Built in 1912

Essential Information

Listing #	202521683
Price	\$225,000
Bedrooms	4
Bathrooms	2.00
Square Footage	1,464
Acres	0.21
Year Built	1912
Type	Single Family
Sub-Type	Freehold



Community Information

Address	279 King Edward Street
Subdivision	Glace Bay
City	Glace Bay
Province	Nova Scotia
Postal Code	B1A3W2

Amenities

Amenities	Golf Course, Park, Playground, Public Transit, Shopping, Place of Worship, Beach
Parking	Detached Garage, Garage, Gravel
# of Garages	2

Interior

Appliances	Range, Dryer, Washer, Freezer, Refrigerator
Cooling	Heat Pump
# of Stories	2

Exterior

Exterior	Wood shingles
Exterior Features	Landscaped
Foundation	Poured Concrete

Listing Details

Listing Office	Coldwell Banker Boardwalk Realty
----------------	----------------------------------



The trademarks MLS®, Multiple Listing Service® and the associated logos are owned by The Canadian Real Estate Association (CREA) and identify the quality of services provided by real estate professionals who are members of CREA. REALTOR®. Member of CREA and more.

Listing information last updated on October 14th, 2025 at 10:31pm MDT