

\$739,900 - 2935 Joseph Howe Drive, Halifax

MLS® #202522173

\$739,900

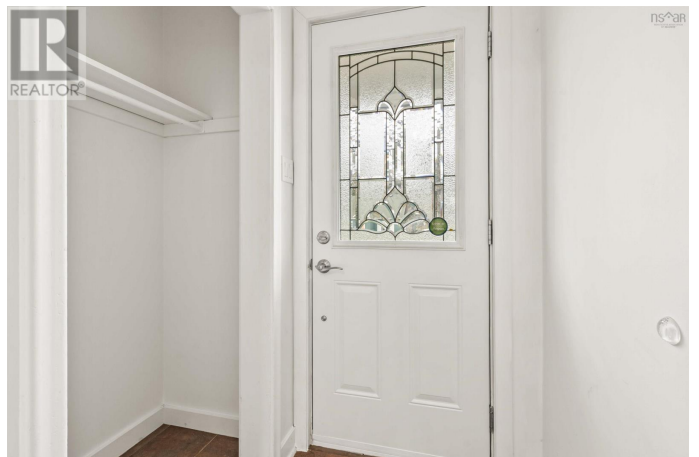
4 Bedroom, 2.00 Bathroom, 2,361 sqft

Single Family on 0.14 Acres

Halifax, Halifax, Nova Scotia

Welcome to 2935 Joseph Howe Drive, in the coveted and sought-after area of West End Halifax, adjacent to the Fairmount area and only seconds to the Rotary. This mid-century bungalow has been meticulously renovated since being purchased 4 years ago, and is ready to be revealed to the public. Upon entry, you will notice the clever use of space and clear sightlines from the kitchen to the living room, with natural light splashing through the large windows, and a decorative fireplace centering the living room. Original, but lovingly restored, hardwood floors connect your main living space to your kitchen, which is well laid out with beautiful updated cabinetry and newer stainless steel appliances. Off the kitchen is your dining area, with massive windows overlooking your private backyard, creating a warm and inviting space to eat, entertain, or host. The upstairs level also features the primary bedroom, two additional bedrooms, and a 4 PC bath. Downstairs features the fourth bedroom, a massive rec room, a 3 PC bath, and laundry room. Outside, you will note a deck off the back of the home ensures a space to host outdoors and relax during summer evenings, while the large backyard has enough room for kids or animals to roam with ease. Dont wait to book your showing, and be sure to ask your Realtor for the full list of upgrades completed! (id:6289)

Built in 1959



Essential Information

Listing #	202522173
Price	\$739,900
Bedrooms	4
Bathrooms	2.00
Square Footage	2,361
Acres	0.14
Year Built	1959
Type	Single Family
Sub-Type	Freehold
Style	Bungalow

Community Information

Address	2935 Joseph Howe Drive
Subdivision	Halifax
City	Halifax
Province	Nova Scotia
Postal Code	B3L4H1

Amenities

Amenities	Park, Playground, Public Transit, Shopping, Place of Worship
Parking	Carport, Concrete
# of Garages	1

Interior

Appliances	Range - Electric, Dishwasher, Dryer, Washer, Refrigerator
Cooling	Heat Pump
# of Stories	1

Exterior

Exterior	Wood siding
Exterior Features	Partially landscaped
Foundation	Poured Concrete

Listing Details

Listing Office	Royal LePage Atlantic (Enfield)
----------------	---------------------------------



The trademarks MLS®, Multiple Listing Service® and the associated logos are owned by The Canadian Real Estate Association (CREA) and identify the quality of services provided by real estate professionals who are members of CREA. REALTOR®. Member of CREA and more.

Listing information last updated on October 14th, 2025 at 9:31am MDT