

\$439,000 - 13297 Highway 6, Wallace Bridge

MLS® #202524599

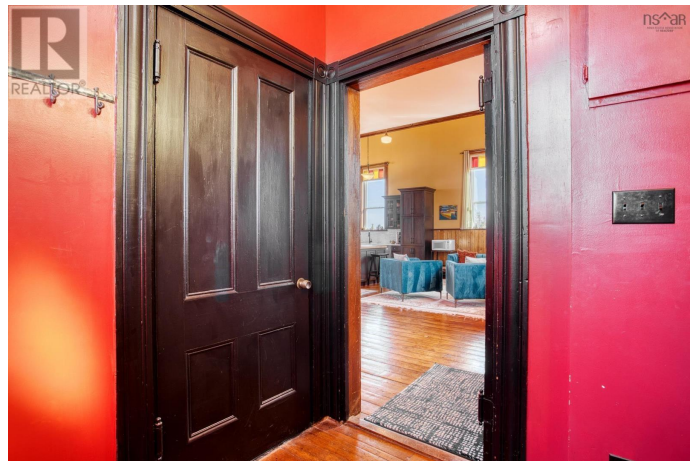
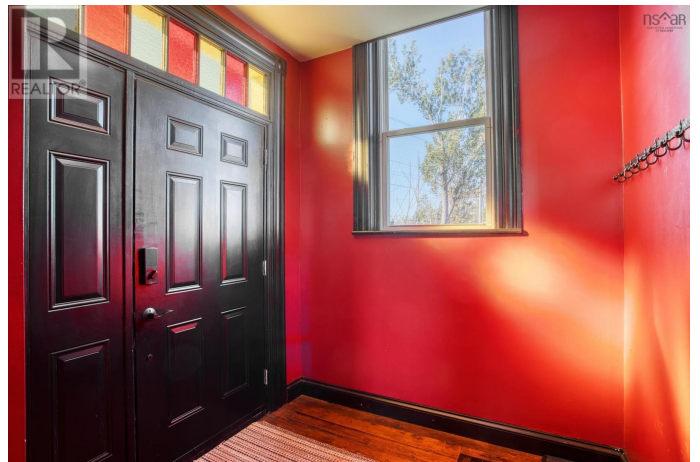
\$439,000

2 Bedroom, 1.00 Bathroom, 1,260 sqft

Single Family on 0.39 Acres

Wallace Bridge, Wallace Bridge, Nova Scotia

Discover a truly unique living experience in this magnificent church conversion that boasts breathtaking bay waterfront views. This one-of-a-kind property features a spacious two-bedroom layout with a charming bunk loft, perfect for family or guests. As you step inside, you'll be welcomed into a large foyer and enter into an open-plan living area that seamlessly combines modern elegance with historic character. The main attraction is the impressive custom kitchen, complete with a massive island, ideal for entertaining and culinary adventures. Refinished softwood floors add warmth and charm to the space. The three-piece bathroom features a generously sized custom-tiled shower. The defined living areas are filled with natural light, thanks to the large stained glass windows at either end, that highlight the floor to the peak vaulted ceilings. The basement currently accommodates a combined laundry and storage area, a den or office, and a utility room. All areas are defined by stud partitions and the walls are spray foamed and ready for finishing. One of the highlights of this property is the tiered deck accessible via patio doors, where you can relax and enjoy the mesmerizing ocean bay views. Multiple parking spaces are available, making this property an excellent short-term rental opportunity. Conveniently located near Fox Harbour golf course and the ski slopes of Wentworth, this church conversion is a slice of paradise for those seeking a unique blend of



history, luxury, and coastal living. Don't miss the chance to make this exceptional property your own and wake up to the beauty of the bay every day. (id:6289)

Built in 1905

Essential Information

Listing #	202524599
Price	\$439,000
Bedrooms	2
Bathrooms	1.00
Square Footage	1,260
Acres	0.39
Year Built	1905
Type	Single Family
Sub-Type	Freehold
Style	Other

Community Information

Address	13297 Highway 6
Subdivision	Wallace Bridge
City	Wallace Bridge
Province	Nova Scotia
Postal Code	B0K1Y0

Amenities

Amenities	Golf Course, Place of Worship
Parking	Gravel, Parking Space(s)
View	Ocean view, View of water
Is Waterfront	Yes
Waterfront	Waterfront

Interior

Appliances	Stove, Dishwasher, Dryer, Washer, Microwave, Refrigerator
# of Stories	2

Exterior

Exterior	Wood siding
----------	-------------

Exterior Features	Landscaped
Foundation	Poured Concrete

Listing Details

Listing Office Century 21 Trident Realty Ltd.



The trademarks MLS®, Multiple Listing Service® and the associated logos are owned by The Canadian Real Estate Association (CREA) and identify the quality of services provided by real estate professionals who are members of CREA. REALTOR®. Member of CREA and more.

Listing information last updated on October 13th, 2025 at 7:31pm MDT