

\$399,500 - 114 Elliott Wd, Fort Saskatchewan

MLS® #E4460484

\$399,500

3 Bedroom, 3.00 Bathroom, 1,396 sqft
Single Family on 0.06 Acres

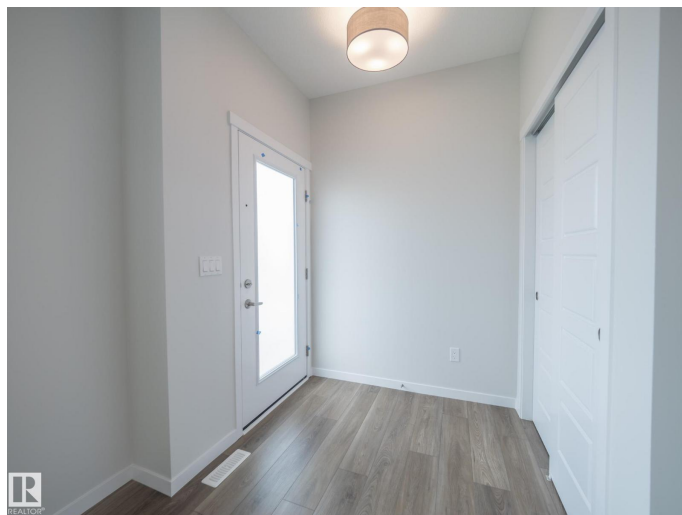
South Pointe, Fort Saskatchewan, Alberta

Step into modern living with this stunning Impact Home featuring a SEPARATE ENTRANCE, thoughtfully designed for both style and functionality. The main floor offers 9' ceilings that enhance the open and inviting atmosphere. The chef-inspired kitchen showcases quartz countertops, sleek cabinetry, and a tile backsplash—perfect for everyday living and entertaining. The spacious living and dining areas, along with a convenient half bath, complete this level. Upstairs, the primary suite is a private retreat with a 4pc ensuite and walk-in closet. Two additional bedrooms, a full bath, and upper-floor laundry add comfort and convenience. Built with exceptional craftsmanship and backed by the Alberta New Home Warranty Program, every Impact Home provides peace of mind for years to come. Home is under construction. *Photos are of a similar home and may include virtual staging; finishings may vary* (id:6289)

Built in 2025

Essential Information

Listing #	E4460484
Price	\$399,500
Bedrooms	3
Bathrooms	3.00
Half Baths	1
Square Footage	1,396



Acres	0.06
Year Built	2025
Type	Single Family
Sub-Type	Freehold

Community Information

Address	114 Elliott Wd
Subdivision	South Pointe
City	Fort Saskatchewan
Province	Alberta
Postal Code	T8L1R8

Amenities

Amenities	Playground, Schools, Shopping, Ceiling - 9ft, Vinyl Windows
Features	Lane
Parking	Parking Pad

Interior

Heating	Forced air
# of Stories	2

Listing Details

Listing Office	MaxWell Challenge Realty
----------------	--------------------------



The trademarks MLS®, Multiple Listing Service® and the associated logos are owned by The Canadian Real Estate Association (CREA) and identify the quality of services provided by real estate professionals who are members of CREA. REALTOR®. Member of CREA and more.

Listing information last updated on October 15th, 2025 at 12:16pm MDT