

\$34,500 - 2470 Proton Avenue, Gull Lake

MLS® #SK006568

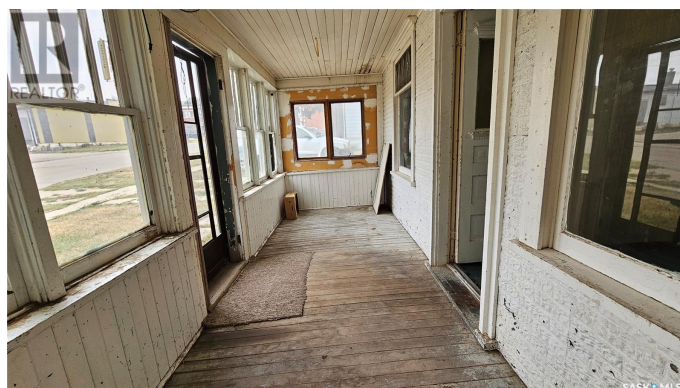
\$34,500

2 Bedroom, 1.00 Bathroom, 695 sqft

Single Family on 0.14 Acres

N/A, Gull Lake, Saskatchewan

Whether you are looking for an inexpensive revenue property or an affordable home, this little house on the prairies could be your answer. Located at 2470 Proton Avenue, Gull Lake, this 1 ½ story home has 640 square feet on the main level, plus a loft area perfect for a bedroom. The main level features a long living room, a large kitchen that could also fit a dining room table, a nice 4-piece bathroom, and a primary bedroom with a huge walk-in closet that would be handy as a nursery. The typical front porch is enclosed and would offer 3 seasons of comfort, or serve as storage space. The water heater was replaced circa 2015 and the high-efficient furnace was installed in 2023. There is ample yard space, off-street parking, and a 20x20 garage. Close to downtown, restaurants, grocery stores and other amenities, this home is waiting for you. (id:6289)



Built in 1921

Essential Information

Listing #	SK006568
Price	\$34,500
Bedrooms	2
Bathrooms	1.00
Square Footage	695
Acres	0.14
Year Built	1921
Type	Single Family

Sub-Type Freehold

Community Information

Address 2470 Proton Avenue
Subdivision N/A
City Gull Lake
Province Saskatchewan
Postal Code S0N1A0

Amenities

Features Treed, Lane, Rectangular, Double width or more driveway
Parking Detached Garage, Gravel, Parking Space(s), RV
of Garages 1

Interior

Appliances Washer, Refrigerator, Satellite Dish, Dryer, Storage Shed, Stove
Heating Natural gas Forced air
of Stories 2

Exterior

Exterior Features Lawn

Listing Details

Listing Office Century 21 Accord Realty



The trademarks MLS®, Multiple Listing Service® and the associated logos are owned by The Canadian Real Estate Association (CREA) and identify the quality of services provided by real estate professionals who are members of CREA. REALTOR®. Member of CREA and more.

Listing information last updated on October 14th, 2025 at 1:01pm MDT