

# \$634,900 - 602 Weir Crescent, Warman

MLS® #SK006663

**\$634,900**

3 Bedroom, 2.00 Bathroom, 1,530 sqft

Single Family on 0.14 Acres

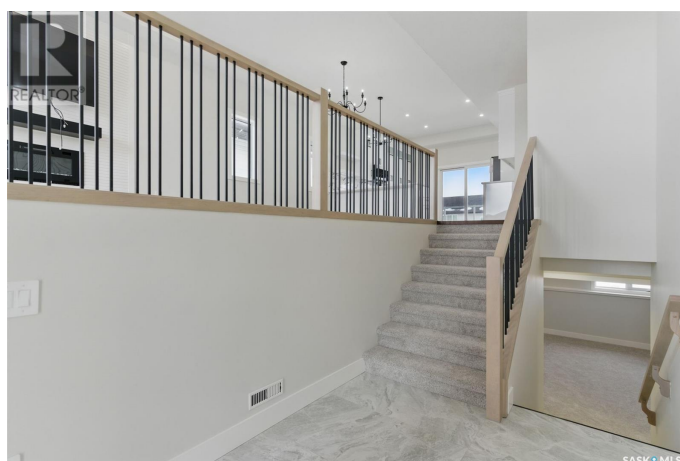
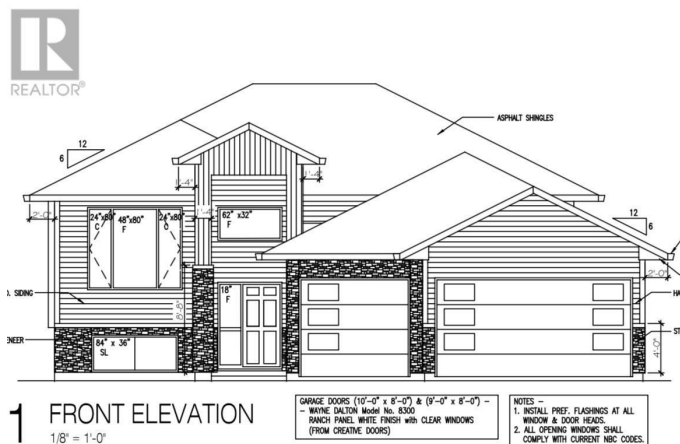
N/A, Warman, Saskatchewan

Great opportunity to live in a brand new home in Warman close to the Legends Golf Course, Sports Centre, grocery stores and all other amenities. 1,530 sqft bi-level. Spacious/open concept with extra high 9' ceilings up and 9' down giving it a light/bright/ modern feel. Main level is perfect for entertaining guests. Kitchen has pantry, tile backsplash, quartz countertops and ample cupboard storage. You'll love the luxurious en-suite bathroom off the primary bedroom with double sink, soaker tub & beautiful custom tile shower. Lots of high-end finishings throughout with upgraded vinyl flooring, unique fixtures, and tile work. Other notable features include a gorgeous electric fireplace in the living room & a covered deck (vinyl deck/ no stairs). Also has an insulated triple attached garage and a triple concrete driveway. South facing front with lovely street appeal. Established local builder, Blanket New Home Warranty, call today! (id:6289)

Built in 2025

## Essential Information

Listings #	SK006663
Price	\$634,900
Bedrooms	3
Bathrooms	2.00
Square Footage	1,530
Acres	0.14



Year Built	2025
Type	Single Family
Sub-Type	Freehold
Style	Bi-level

### Community Information

Address	602 Weir Crescent
Subdivision	N/A
City	Warman
Province	Saskatchewan
Postal Code	S0K4S4

### Amenities

Features	Corner Site, Sump Pump
Parking	Attached Garage, Parking Space(s)
# of Garages	1

### Interior

Appliances	Washer, Refrigerator, Dishwasher, Dryer, Microwave, Garage door opener remote(s), Stove
Heating	Natural gas Forced air
Fireplace	Yes
Fireplaces	Electric

### Listing Details

Listing Office	RE/MAX North Country
----------------	----------------------



The trademarks MLS®, Multiple Listing Service® and the associated logos are owned by The Canadian Real Estate Association (CREA) and identify the quality of services provided by real estate professionals who are members of CREA. REALTOR®. Member of CREA and more.

Listing information last updated on October 13th, 2025 at 7:31pm MDT