

# \$699,900 - Lamont Acreage/imperial Area, Wreford Rm No. 280

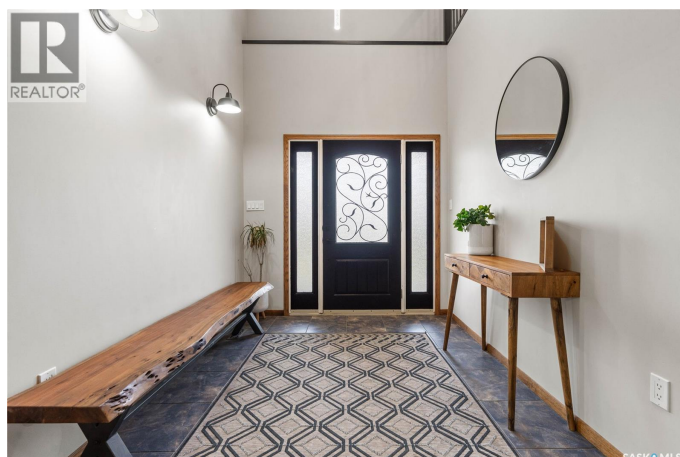
MLS® #SK019606

**\$699,900**

6 Bedroom, 4.00 Bathroom, 2,722 sqft  
Single Family on 19.94 Acres

N/A, Wreford Rm No. 280, Saskatchewan

Welcome to your dream acreage! This gorgeous property offers 19.94 acres of meticulously maintained land. Whether you're looking for space, privacy, or a blend of agricultural and residential potential, this has it all. Step into the large, tiled front entry and feel right at home. Main floor showcases a spacious living room with massive windows and a striking stone fireplace, a formal dining area with rich hardwood floors, and a truly impressive kitchen. Designed for entertaining and family living, the kitchen features a large island with a second sink, stainless steel appliances, wall oven, tile backsplash, and abundant cabinetry. A convenient 2-piece bathroom also on the main level. Upstairs, double doors lead into the primary bedroom with a 3-piece ensuite featuring a stand-up shower, lots of counter space, and ample storage. You'll also find 5 more bedrooms, a 4-piece bathroom, a bonus room, a dedicated office, and laundry—all thoughtfully placed on the upper floor for comfort and functionality. The finished basement offers even more living space with a cozy family room, a recreation room currently used as a home gym, an additional 3-piece bathroom, utility room, 9 ft ceilings throughout and luxurious in-floor heating. The heated, insulated double attached garage also features in-floor heating—ideal for year-round use. There are two furnaces for the upstairs



and main floor separately. A reverse osmosis system is included for the house tap. Iron filter/water softener system is in use. Property is professionally landscaped and offers an abundance of space for outdoor storage, gardening, or future development. Majority of open acres are currently rented to a local farmer. Beautifully treed backyard with the property line that extends beyond the trees. Bus comes to the front door to the wonderful K-12 school in Imperial! Land is located across from crown land/national wildlife refuge! If thinking of moving the home, sellers have the costs for that so please inquire. (id:6289)

Built in 2015

### Essential Information

Listing #	SK019606
Price	\$699,900
Bedrooms	6
Bathrooms	4.00
Square Footage	2,722
Acres	19.94
Year Built	2015
Type	Single Family
Sub-Type	Freehold
Style	2 Level

### Community Information

Address	Lamont Acreage/imperial Area
Subdivision	N/A
City	Wreford Rm No. 280
Province	Saskatchewan
Postal Code	S0G2J0

### Amenities

Features	Acreage, Treed, Irregular lot size, Double width or more driveway, Sump Pump
Parking	Attached Garage, Gravel, Heated Garage, Parking Space(s)

# of Garages 1

## Interior

Appliances Washer, Refrigerator, Satellite Dish, Dishwasher, Dryer, Garburator, Oven - Built-In, Humidifier, Window Coverings, Garage door opener remote(s), Hood Fan, Storage Shed, Stove

Heating Propane Forced air, Hot Water, In Floor Heating

Cooling Central air conditioning, Air exchanger

Fireplace Yes

Fireplaces Wood

# of Stories 2

Has Basement Yes

## Exterior

Exterior Features Lawn, Garden Area

## Listing Details

Listing Office Century 21 Fusion



The trademarks MLS®, Multiple Listing Service® and the associated logos are owned by The Canadian Real Estate Association (CREA) and identify the quality of services provided by real estate professionals who are members of CREA. REALTOR®. Member of CREA and more.

Listing information last updated on October 13th, 2025 at 4:16am MDT