

\$359,900 - 244 Central Avenue S, Fort Qu'appelle

MLS® #SK019692

\$359,900

4 Bedroom, 3.00 Bathroom, 1,480 sqft

Single Family on 0.17 Acres

N/A, Fort Qu'appelle, Saskatchewan

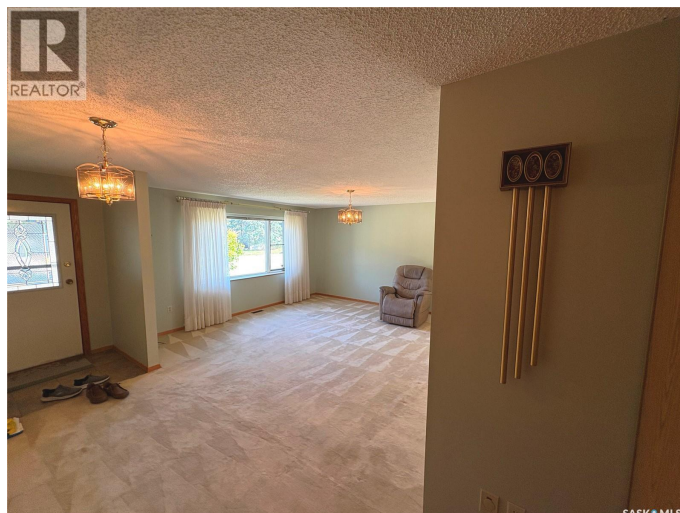
Welcome to 244 Central Ave S in Fort Qu'Appelle, a spacious 1,480 Sqft well-built home with a double attached garage, offering room for the whole family. Featuring 4 generous bedrooms and 3 bathrooms, every room throughout this property is designed with space and comfort in mind. The convenience of main floor laundry adds to the home's functionality, while the sunroom provides the perfect spot to relax. A fully developed basement offers even more living and entertaining space. Ideally located in an excellent neighborhood, this home combines size, practicality, and a prime location—making it a standout opportunity, ready for your personal touch! (id:6289)

Built in 1982

Essential Information

Listing #	SK019692
Price	\$359,900
Bedrooms	4
Bathrooms	3.00
Square Footage	1,480
Acres	0.17
Year Built	1982
Type	Single Family
Sub-Type	Freehold
Style	Raised bungalow

Community Information



Address	244 Central Avenue S
Subdivision	N/A
City	Fort Qu'appelle
Province	Saskatchewan
Postal Code	S0G1S0

Amenities

Features	Treed, Rectangular, Double width or more driveway
Parking	Attached Garage, Parking Space(s)
# of Garages	1

Interior

Appliances	Washer, Refrigerator, Satellite Dish, Dryer, Freezer, Oven - Built-In, Window Coverings, Hood Fan, Central Vacuum, Storage Shed
Heating	Natural gas Forced air
Cooling	Central air conditioning, Air exchanger
# of Stories	1
Has Basement	Yes

Exterior

Exterior Features	Lawn, Underground sprinkler
-------------------	-----------------------------

Listing Details

Listing Office	Hatfield Valley Agencies Inc.
----------------	-------------------------------



The trademarks MLS®, Multiple Listing Service® and the associated logos are owned by The Canadian Real Estate Association (CREA) and identify the quality of services provided by real estate professionals who are members of CREA. REALTOR®. Member of CREA and more.

Listing information last updated on October 15th, 2025 at 7:46am MDT